

## • Rabbit Anti-laminin Polyclonal Antibody

### Primary Antibodies

#### Background:

laminins are the major noncollagenous components of basement membranes that mediate cell adhesion, growth migration, and differentiation; the laminin-type epidermal growth factor-like module occurs in tandem arrays; the domain contains 4 disulfide bonds (loops a-d) the first three resemble epidermal growth factor (EGF); the number of copies of this domain in the different forms of laminins is highly variable ranging from 3 up to 22 copies.

#### Source/Purification:

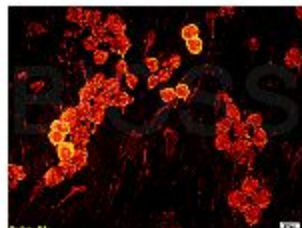
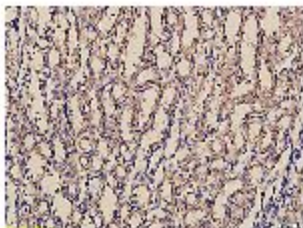
KLH conjugated synthetic peptide derived from human laminin C-terminus. Was purified by Protein A and peptide affinity chromatography.

**Storage:** Prepared as lyophilized powder or liquid and shipped on ice. Store at -20°C for one year.

#### Reconstitution:

If the antibody is in liquid form, no reconstitution needed.

Reconstitution is only required for the lyophilized antibody. Please refer to the reconstitution instruction card in the package.



**Size:** 100ul or 100ug lyophilized

**Concentration:** 1ug/uL

**Host:** Rabbit

**Reactivities:** Human, Mouse, Rat, Cow,

**Application:**

- WB(1:100-500)
  - ELISA(1:500-1000)
  - IP(1:20-100)
  - IHC-P(1:100-500)
  - IHC-F(1:100-500)
  - IF(1:100-500)
  - Not yet tested in other applications.
- Optimal working dilutions must be determined by the end user.

**Antibody Type:** Polyclonal

**Isotype:** IgG

**Molecular Weight:** 131kDa

**Preservatives:**

10ug/uL BSA and 0.1% NaN<sub>3</sub>.

For research use only. CAUTION: Not for human or animal therapeutic or diagnostic use.