

## • Rabbit Anti-SLC34A2 Polyclonal Antibody

Primary Antibodies

### Background:

Na<sup>+</sup>/Pi-cotransporter This is a family of mainly mammalian type II renal Na<sup>+</sup>/Pi-cotransporters with other related sequences from lower eukaryotes and bacteria some of which are also Na<sup>+</sup>/Pi-cotransporters. In the kidney the type II renal Na<sup>+</sup>/Pi-cotransporters protein allows reabsorption of filtered Pi in the proximal tubule.

### Source/Purification:

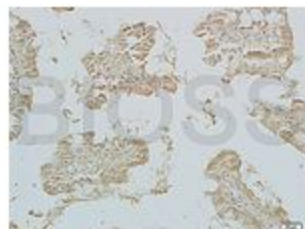
KLH conjugated synthetic peptide derived from mouse SLC34A2 (1-50aa). Was purified by Protein A and peptide affinity chromatography.

**Storage:** Prepared as lyophilized powder or liquid and shipped on ice. Store at -20°C for one year.

### Reconstitution:

If the antibody is in liquid form, no reconstitution needed.

Reconstitution is only required for the lyophilized antibody. Please refer to the reconstitution instruction card in the package.



**Size:** 100ul or 100ug lyophilized

**Concentration:** 1ug/uL

**Host:** Rabbit

**Reactivities:** Mouse, Rat,

**Application:**

- WB(1:100-500)
  - ELISA(1:500-1000)
  - IP(1:20-100)
  - IHC-P(1:100-500)
  - IHC-F(1:100-500)
  - IF(1:100-500)
  - Not yet tested in other applications.
- Optimal working dilutions must be determined by the end user.

**Antibody Type:** Polyclonal

**Isotype:** IgG

**Molecular Weight:** 77kDa

**Preservatives:**

10ug/uL BSA and 0.1% NaN<sub>3</sub>.

For research use only. CAUTION: Not for human or animal therapeutic or diagnostic use.