

bs-1025R

• Rabbit Anti-HGF Polyclonal Antibody

Primary Antibodies

Background:

HGF/SF (Hepatocyte Growth Factor/Scatter Factor) is a member of the plasminogen related growth factor family, members of which are potent effectors of growth, movement and differentiation of epithelial and endothelial cells. HGF/SF may exhibit morphogenesis in adjacent cells. The membrane receptor for HGF/SF is the product of the proto-oncogene c-met, a receptor tyrosine kinase.

Source/Purification:

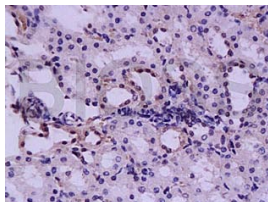
KLH conjugated synthetic peptide derived from human HGF alpha. Was purified by Protein A and peptide affinity chromatography.

Storage: Prepared as lyophilized powder or liquid and shipped on ice. Store at -20°C for one year.

Reconstitution:

If the antibody is in liquid form, no reconstitution needed.

Reconstitution is only required for the lyophilized antibody. Please refer to the reconstitution instruction card in the package.



For full size images and description please click [HERE](#).

Size: 100ul or 100ug lyophilized

Concentration: 1ug/uL

Host: Rabbit

Reactivities:

Human, Mouse, Rat, Dog, Pig, Cow, Horse, Rabbit, Guinea Pig, G

Application:

- WB(1:100-500)
- ELISA(1:500-1000)
- IP(1:20-100)
- IHC-P(1:100-500)
- IHC-F(1:100-500)
- IF(1:100-500)
- Not yet tested in other applications. Optimal working dilutions must be determined by the end user.

Antibody Type: Polyclonal

Isotype: IgG

Molecular Weight: 54/80kDa

Preservatives: 10ug/uL BSA and 0.1% NaN₃.

For research use only. CAUTION: Not for human or animal therapeutic or diagnostic use.