

• Rabbit Anti-MCSF/M-CSF Polyclonal Antibody

Primary Antibodies

Background:

Four distinct colony-stimulating factors (CSFs) that promote survival, proliferation and differentiation of bone marrow precursor cells have been well characterized: granulocyte macrophage CSF (GM-CSF), granulocyte CSF (G-CSF), macrophage CSF (M-CSF), and Interleukin-3 (IL-3, Multi-CSF). Both GM-CSF and IL-3 are multipotential growth factors, stimulating proliferation of progenitor cells from more than one hematopoietic lineage. In contrast, G-CSF and M-CSF are lineage restricted hematopoietic growth factors, stimulating final mitotic divisions and the terminal cellular maturation of the partially differentiated hematopoietic progenitors.

Macrophage CSF, also known as CSF1, is produced by monocytes, fibroblasts and endothelial cells. It stimulates the formation of macrophage colonies, enhances antibody-dependent, cell-mediated cytotoxicity by monocytes and macrophages, and inhibits bone resorption by osteoclasts. Natural human M-CSF is a dimeric glycoprotein of 70-90 kD molecular weight, existing in multiple glycosylation forms. It binds to a 165 kD glycoprotein of the receptor tyrosine kinase subclass III, a family that includes the receptors for platelet derived growth factor (PDGF) and stem cell factor (SCF).

Source/Purification:

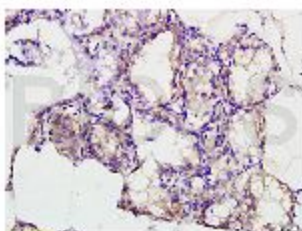
KLH conjugated synthetic peptide derived from mouse MCSF C-terminus. Was purified by Protein A and peptide affinity chromatography.

Storage: Prepared as lyophilized powder or liquid and shipped on ice. Store at -20°C for one year.

Reconstitution:

If the antibody is in liquid form, no reconstitution needed.

Reconstitution is only required for the lyophilized antibody. Please refer to the reconstitution instruction card in the package.



Size: 100ul or 100ug lyophilized

Concentration: 1ug/uL

Host: Rabbit

Reactivities: Human, Mouse, Rat,

Application:

- WB(1:100-500)
- ELISA(1:500-1000)
- IP(1:20-100)
- IHC-P(1:100-500)
- IHC-F(1:100-500)
- IF(1:100-500)
- Not yet tested in other applications. Optimal working dilutions must be determined by the end user.

Antibody Type: Polyclonal

Isotype: IgG

Molecular Weight: 60kDa

Preservatives:

10ug/uL BSA and 0.1% NaN₃.

For research use only. CAUTION: Not for human or animal therapeutic or diagnostic use.