

• Rabbit Anti-5-HTR2A/HTR2A Polyclonal Antibody

Primary Antibodies

Background:

5HT2A receptor is one of the several different receptors for 5-hydroxytryptamine (serotonin), a biogenic hormone that functions as a neurotransmitter, a hormone, and a mitogen. 5HT2A receptor belongs to the G-protein coupled receptor 1 family and mediates its action by association with G proteins that activate a phosphatidylinositol-calcium second messenger system. This receptor is involved in tracheal smooth muscle contraction, bronchoconstriction, and control of aldosterone production. 5HT2A receptor is an integral membrane protein which localizes to the post-synaptic thickening of axo-dendritic synapses. 5HT2A receptor protein contains a PDZ domain-binding motif which is involved in the interaction with INADL, CASK, APBA1, DLG1 and DLG4.

Source/Purification:

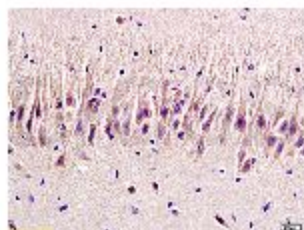
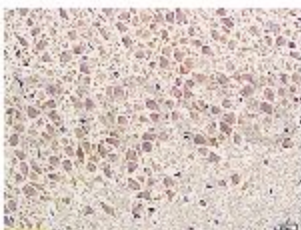
KLH conjugated synthetic peptide derived from human 5-HTR2A N-terminus. Was purified by Protein A and peptide affinity chromatography.

Storage: Prepared as lyophilized powder or liquid and shipped on ice. Store at -20°C for one year.

Reconstitution:

If the antibody is in liquid form, no reconstitution needed.

Reconstitution is only required for the lyophilized antibody. Please refer to the reconstitution instruction card in the package.



Size: 100ul or 100ug lyophilized

Concentration: 1ug/uL

Host: Rabbit

Reactivities: Human, Mouse, Rat,

Application:

- WB(1:100-500)
 - ELISA(1:500-1000)
 - IP(1:20-100)
 - IHC-P(1:100-500)
 - IHC-F(1:100-500)
 - IF(1:100-500)
 - Not yet tested in other applications.
- Optimal working dilutions must be determined by the end user.

Antibody Type: Polyclonal

Isotype: IgG

Molecular Weight: 52kDa

Preservatives:

10ug/uL BSA and 0.1% NaN₃.

For research use only. CAUTION: Not for human or animal therapeutic or diagnostic use.