

• Rabbit Anti-NGX6/C9orf127 Polyclonal Antibody

Primary Antibodies

Background:

NGX6 (nasopharyngeal carcinoma/NPC associated gene 6) may function as a regulator of the EGFR pathway. Probable tumor suppressor which may function in cell growth, proliferation and adhesion. [SUBUNIT] Isoform 2 (via its cytoplasmic part) interacts with EZR. [SUBCELLULAR LOCATION] Isoform 2: Cell membrane; Multi-pass membrane protein (Probable). Cytoplasm (Probable). Nucleus (Probable). Mitochondrion. Endoplasmic reticulum. Belongs to the NGX6 family.

The down-regulation of C9orf127 may be closely associated with tumorigenesis and metastasis of colorectal carcinoma. However, it may not contribute to the development and progression of gastric carcinoma.

Source/Purification:

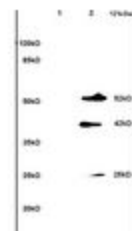
KLH conjugated synthetic peptide derived from human NGX6 N-terminus. Was purified by Protein A and peptide affinity chromatography.

Storage: Prepared as lyophilized powder or liquid and shipped on ice. Store at -20°C for one year.

Reconstitution:

If the antibody is in liquid form, no reconstitution needed.

Reconstitution is only required for the lyophilized antibody. Please refer to the reconstitution instruction card in the package.



Size: 100ul or 100ug lyophilized

Concentration: 1ug/ul

Host: Rabbit

Reactivities: Human, Mouse, Rat, Cow,

Application:

- WB(1:100-500)
 - ELISA(1:500-1000)
 - IP(1:20-100)
 - IHC-P(1:100-500)
 - IHC-F(1:100-500)
 - IF(1:100-500)
 - Not yet tested in other applications.
- Optimal working dilutions must be determined by the end user.

Antibody Type: Polyclonal

Isotype: IgG

Molecular Weight: 52kDa

Preservatives:

10ug/uL BSA and 0.1% NaN₃.

For research use only. CAUTION: Not for human or animal therapeutic or diagnostic use.