

• Rabbit Anti-Laminin alpha 5 Polyclonal Antibody

Primary Antibodies

Background:

Laminins are a family of heterotrimeric extracellular glycoproteins consisting of alpha, beta, and gamma chains. Laminins are thought to mediate the attachment, migration and organization of cells into tissues during embryonic development by interacting with other extracellular matrix components. Laminin alpha 5 (LAMA5) belongs to the alpha subfamily of laminin chains and is a major component of basement membranes. Laminin alpha 5 is the alpha chain in the Laminin 15 complex which is a heterotrimer composed of alpha 5/beta 2/gamma 3 which are bound to each other by disulfide bonds into a cross shaped molecule comprising one long and three short arms with globules at each end.

Source/Purification:

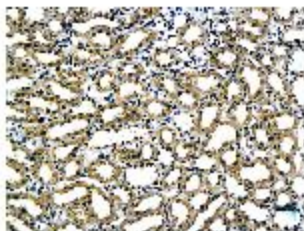
KLH conjugated synthetic peptide derived from human Laminin alpha 5 N-terminus. Was purified by Protein A and peptide affinity chromatography.

Storage: Prepared as lyophilized powder or liquid and shipped on ice. Store at -20°C for one year.

Reconstitution:

If the antibody is in liquid form, no reconstitution needed.

Reconstitution is only required for the lyophilized antibody. Please refer to the reconstitution instruction card in the package.



Size: 100ul or 100ug lyophilized

Concentration: 1ug/uL

Host: Rabbit

Reactivities:

Human, Mouse, Rat, Dog, Cow, Horse, Rabbit,

Application:

- ELISA(1:500-1000)
- IHC-P(1:100-500)
- IHC-F(1:100-500)
- IF(1:100-500)
- Not yet tested in other applications. Optimal working dilutions must be determined by the end user.

Antibody Type: Polyclonal

Isotype: IgG

Molecular Weight: 402kDa

Preservatives:

10ug/uL BSA and 0.1% NaN3.

For research use only. CAUTION: Not for human or animal therapeutic or diagnostic use.