

• **Rabbit Anti-NRAS Polyclonal Antibody**

Primary Antibodies

**Background:**

N-RAS (neuroblastoma RAS viral oncogene homolog) analogously to other GTP-binding proteins (such as Translation Elongation Factor EFTu or signal transducing G-Proteins) RAS proteins are involved in signal transduction pathways, ras gene family is part of the ras superfamily including the mammalian RAS, RAL, RAC, RHO, RAP, and RAB gene families and the yeast homologs like SEC4 and YPT1 genes; genes encode small monomeric proteins of low molecular mass (20-30 kDa) which share at least 30% homology to RAS proteins.

**Source/Purification:**

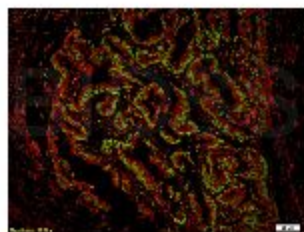
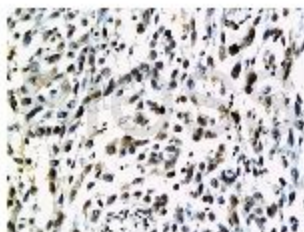
KLH conjugated synthetic peptide derived from human N-Ras C-terminus. Was purified by Protein A and peptide affinity chromatography.

**Storage:** Prepared as lyophilized powder or liquid and shipped on ice. Store at -20°C for one year.

**Reconstitution:**

If the antibody is in liquid form, no reconstitution needed.

Reconstitution is only required for the lyophilized antibody. Please refer to the reconstitution instruction card in the package.



**Size:** 100ul or 100ug lyophilized

**Concentration:** 1ug/uL

**Host:** Rabbit

**Reactivities:** Human, Mouse, Rat, Pig, Cow,

**Application:**

- WB(1:100-500)
- ELISA(1:500-1000)
- IP(1:20-100)
- IHC-P(1:100-500)
- IHC-F(1:100-500)
- IF(1:100-500)
- Not yet tested in other applications.  
Optimal working dilutions must be determined by the end user.

**Antibody Type:** Polyclonal

**Isotype:** IgG

**Molecular Weight:** 21kDa

**Preservatives:**

10ug/uL BSA and 0.1% NaN3.

For research use only. CAUTION: Not for human or animal therapeutic or diagnostic use.