

bs-1173R-A647

• Rabbit Anti- TNFRSF18/GITR Polyclonal Antibody, Alexa Fluor 647 conjugated

Conjugated Primary Antibodies

Background:

TNFRSF18 or GITR (glucocorticoid-induced TNF receptor family-regulated gene) is a 25 kD TNF receptor superfamily member (also known as AITR and TNFRSF18) originally identified in the mouse by comparing untreated and dexamethasone-treated murine T cell hybridoma cells. Human GITR was subsequently identified by searching an expressed sequence tag database. GITR is expressed on activated lymphocytes and is upregulated by T cell receptor engagement. The cytoplasmic domain of GITR is homologous to CD40, 4-1BB and CD27 and has been shown to interact with TRAF 1-3, but not TRAF 5 or 6. GITR signaling has been shown to regulate T cell proliferation and TCR-mediated apoptosis, and to break immunological self-tolerance. GITR appears to be highly expressed on CD4+CD25+ T regulatory cells and has been shown to induce NF- κ B activation through TRAF2/NIK signaling. GITR has been proposed to be involved in the development of regulatory T cells and to regulate the activity of Th1 subsets. GITR binds GITRL, a TNF superfamily ligand expressed on endothelial cells, dendritic cells, macrophages, and B cells.

Purification: Was purified by Protein A and peptide affinity chromatography.

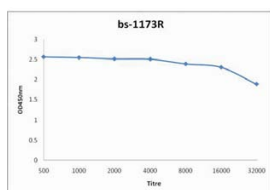
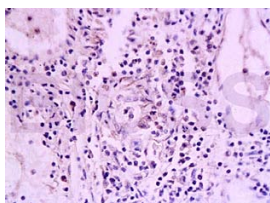
Storage:

Prepared as lyophilized powder or liquid and shipped on ice. Store at -20°C for one year. Protect from light.

Reconstitution:

If the antibody is in liquid form, no reconstitution needed.

Reconstitution is only required for the lyophilized antibody. Please refer to the reconstitution instruction card in the package.



Size: 100ul or 100ug lyophilized

Concentration: 1ug/uL

Host: Rabbit

Reactivities: Human, Mouse, Rat,

Application:

- IF (1:100-500)
- Not yet tested in other applications. Optimal working dilutions must be determined by the end user.

Antibody Type: Polyclonal

Isotype: IgG

Molecular Weight: 26kDa

Preservatives:

10ug/uL BSA and 0.1% NaN₃.

For research use only. CAUTION: Not for human or animal therapeutic or diagnostic use.

For full size images and description please click [HERE](#).