

bs-1192R-Biotin

• Rabbit Anti-CD14 Polyclonal Antibody, Biotin conjugated

Conjugated Primary Antibodies

Background:

CD14 is a single copy gene encoding 2 protein forms: a 50 to 55 kDa glycosylphosphatidylinositol anchored membrane protein (mCD14) and a monocyte or liver derived soluble serum protein (sCD14) that lacks the anchor. Both molecules are critical for lipopolysaccharide (LPS) dependent signal transduction, and sCD14 confers LPS sensitivity to cells lacking mCD14. Increased sCD14 levels are associated with inflammatory infectious diseases and high mortality in gram negative shock. CD14 also appears to be involved in clearance of gram-negative bacteria via its high affinity binding to LPS-LPB complexes.

Purification: Was purified by Protein A and peptide affinity chromatography.

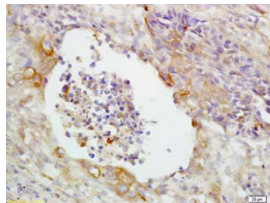
Storage:

Aqueous buffered solution containing 100ug/ml BSA, 50% glycerol and less than 0.09% sodium azide. Store at -20°C for 12 months. [Product without BSA and/or sodium azide is available for special order.]

Reconstitution:

If the antibody is in liquid form, no reconstitution needed.

Reconstitution is only required for the lyophilized antibody. Please refer to the reconstitution instruction card in the package.



For full size images and description please click [HERE](#).

Size: 100ul

Concentration: 1ug/uL

Host: Rabbit

Reactivities:

Human, Mouse, Rat, Dog, Pig, Bovine, Rabbit, Sheep,

Application:

- WB(1:100-500)
- ELISA(1:500-1000)
- IHC-P(1:100-500)
- Not yet tested in other applications. Optimal working dilutions must be determined by the end user.

Antibody Type: Polyclonal

Isotype: IgG

Molecular Weight: 40kDa

Note:

For research use only. CAUTION: Not for human or animal therapeutic or diagnostic use.