

• Rabbit Anti-GRP78/BIP/HSPA5 Polyclonal Antibody

Primary Antibodies

Background:

The 78 kDa glucose regulated protein/BIP (GRP78) belongs to the family of ~70 kDa heat shock proteins (HSP 70). GRP78 is a resident protein of the endoplasmic reticulum (ER) and may associate transiently with a variety of newly synthesized secretory and membrane proteins or permanently with mutant or defective proteins that are incorrectly folded, thus preventing their export from the ER lumen. GRP78 is a highly conserved protein that is essential for cell viability. The highly conserved sequence Lys-Asp-Glu-Leu (KDEL) is present at the C terminus of GRP78 and other resident ER proteins including glucose regulated protein 94 (GRP 94) and protein disulfide isomerase (PDI). The presence of carboxy terminal KDEL appears to be necessary for retention and appears to be sufficient to reduce the secretion of proteins from the ER. This retention is reported to be mediated by a KDEL receptor.

Source/Purification:

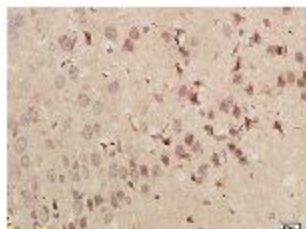
KLH conjugated synthetic peptide derived from human GRP78 C-terminus. Was purified by Protein A and peptide affinity chromatography.

Storage: Prepared as lyophilized powder or liquid and shipped on ice. Store at -20°C for one year.

Reconstitution:

If the antibody is in liquid form, no reconstitution needed.

Reconstitution is only required for the lyophilized antibody. Please refer to the reconstitution instruction card in the package.



Size: 100ul or 100ug lyophilized

Concentration: 1ug/uL

Host: Rabbit

Reactivities: Human, Mouse, Rat,

Application:

- WB(1:100-500)
- ELISA(1:500-1000)
- IP(1:20-100)
- IHC-P(1:100-500)
- IHC-F(1:100-500)
- IF(1:100-500)
- Not yet tested in other applications.
Optimal working dilutions must be determined by the end user.

Antibody Type: Polyclonal

Isotype: IgG

Molecular Weight: 78kDa

Preservatives:

10ug/uL BSA and 0.1% NaN₃.

For research use only. CAUTION: Not for human or animal therapeutic or diagnostic use.