

bs-1235R-Cy7

• Rabbit Anti-Hyaluronidase-1 Polyclonal Antibody, Cy7 conjugated

Conjugated Primary Antibodies

Background:

Hyaluronidase degrades hyaluronic acid, which is an important structural proteoglycan found in basement membranes and also extracellular matrices. There are six members of the hyaluronidase family. Hyaluronidase PH20 is a GPI-anchored enzyme located on the human sperm surface and inner acrosomal membrane and plays a role in sperm penetration through the the hyaluronic acid-rich cumulus cell layer surrounding the oocyte. Abnormal expression of this gene has been implicated in degradation of basement membranes leading to tumor invasion and metastasis.

Purification: Was purified by Protein A and peptide affinity chromatography.

Storage:

Prepared as lyophilized powder or liquid and shipped on ice. Store at -20°C for one year. Protect from light.

Reconstitution:

If the antibody is in liquid form, it is ready to use, no reconstitution needed.

Reconstitution is only required for the lyophilized antibody. Please refer to the reconstitution instruction card in the package.

Size: 100ul or 100ug lyophilized

Concentration: 1ug/uL

Host: Rabbit

Reactivities: Human, Mouse, Rat,

Application:

- IF (1:100-500)
- Not yet tested in other applications. Optimal working dilutions must be determined by the end user.

Antibody Type: Polyclonal

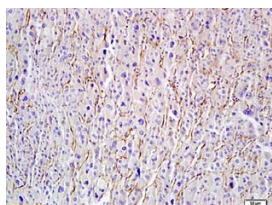
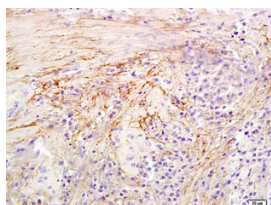
Isotype: IgG

Molecular Weight: 45kDa

Preservatives:

10ug/uL BSA and 0.1% NaN₃.

For research use only. CAUTION: Not for human or animal therapeutic or diagnostic use.



For full size images and description please click [HERE](#).