

## bs-1235R-FITC

### • Rabbit Anti-Hyaluronidase-1 Polyclonal Antibody, FITC conjugated

Conjugated Primary Antibodies

#### Background:

Hyaluronidase degrades hyaluronic acid, which is an important structural proteoglycan found in basement membranes and also extracellular matrices. There are six members of the hyaluronidase family. Hyaluronidase PH20 is a GPI-anchored enzyme located on the human sperm surface and inner acrosomal membrane and plays a role in sperm penetration through the the hyaluronic acid-rich cumulus cell layer surrounding the oocyte. Abnormal expression of this gene has been implicated in degradation of basement membranes leading to tumor invasion and metastasis.

**Purification:** Was purified by Protein A and peptide affinity chromatography.

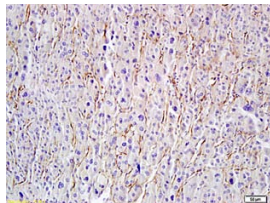
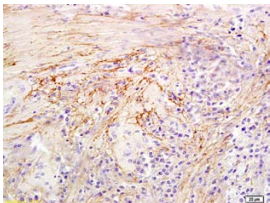
#### Storage:

Prepared as lyophilized powder or liquid and shipped on ice. Store at -20°C for one year. Protect from light.

#### Reconstitution:

If the antibody is in liquid form, no reconstitution needed.

Reconstitution is only required for the lyophilized antibody. Please refer to the reconstitution instruction card in the package.



For full size images and description please click [HERE](#).

**Size:** 100ul or 100ug lyophilized

**Concentration:** 1ug/uL

**Host:** Rabbit

**Reactivities:** Human, Mouse, Rat,

**Application:**

- IF(1:100-500)
- Not yet tested in other applications. Optimal working dilutions must be determined by the end user.

**Antibody Type:** Polyclonal

**Isotype:** IgG

**Molecular Weight:** 45kDa

**Preservatives:**

10ug/uL BSA and 0.1% NaN<sub>3</sub>.

For research use only. CAUTION: Not for human or animal therapeutic or diagnostic use.