

bs-1298R-Biotin

• Rabbit Anti-Smac/DIABLO Polyclonal Antibody, Biotin conjugated

Conjugated Primary Antibodies

Background:

This gene encodes an inhibitor of apoptosis protein (IAP)-binding protein. The encoded mitochondrial protein enters the cytosol when cells undergo apoptosis, and it moderates the caspase inhibition of IAPs. Multiple polyadenylation sites have been found for this gene. Several alternatively spliced transcript variants that encode distinct isoforms have been described for this gene but the validity of some transcripts, and their predicted ORFs, has not been determined conclusively. The inhibitor of apoptosis (IAP) proteins regulate programmed cell death by inhibiting members of the caspase family of enzymes. A novel mammalian protein that binds to IAPs and neutralizes their inhibitory effect on caspases has been designated Smac/DIABLO. This is a mitochondrial protein that is released along with cytochrome c during apoptosis and activates the cytochrome c/Apaf-1/caspase-9 pathway. Analysis of the structural basis of Smac/DIABLO reveals that the N-terminal amino acids are required for binding of Smac/DIABLO to IAPs and activation of caspases. Smac/DIABLO is expressed in a variety of human and mouse tissues.

Purification: Was purified by Protein A and peptide affinity chromatography.

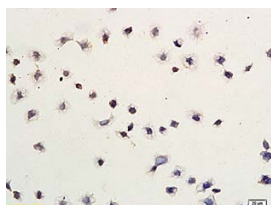
Storage:

Prepared as lyophilized powder and shipped on ice. Store at -20°C for one year as lyophilized powder or liquid. Please reconstitute before use.

Reconstitution:

If the antibody is in liquid form, no reconstitution needed.

Reconstitution is only required for the lyophilized antibody. Please refer to the reconstitution instruction card in the package.



For full size images and description please click [HERE](#).

Size: 100ul or 100ug lyophilized

Concentration: 1ug/uL

Host: Rabbit

Reactivities:

Human, Mouse, Rat, Chicken, Dog, Pig, Cow, Horse,

Application:

- WB(1:100-500)
- ELISA(1:500-1000)
- IHC-P(1:100-500)
- IHC-F(1:100-500)
- Not yet tested in other applications. Optimal working dilutions must be determined by the end user.

Antibody Type: Polyclonal

Isotype: IgG

Molecular Weight: 27kDa

Preservatives:

10ug/uL BSA and 0.1% NaN₃.

For research use only. CAUTION: Not for human or animal therapeutic or diagnostic use.