

## - Rabbit Anti-SSTR3 Polyclonal Antibody

### Primary Antibodies

#### Background:

Somatostatin is a tetradecapeptide that is widely distributed in the body. It acts on multiple organs in the body and also functions as a neuropeptide affecting electrical activity of neurons. Somatostatin acts to regulate numerous physiological processes by binding to and activating specific receptors in target tissues.

There are five somatostatin receptor subtypes termed SSTR 1 to 5. They are G protein coupled receptors characterized by seven transmembrane helices with an extracellular amino terminal domain and an intracellular carboxy terminus. These receptors are activated by somatostatin secreted by nerve and endocrine cells and function in the regulation of numerous physiological processes such as the secretion of insulin, glucagon and growth hormone. The SSTRs also play a role in cell growth induced by neuronal excitation in both the central and peripheral nervous system. Somatostatin receptors have been implicated in numerous diseases ranging from Alzheimer's to cancers of the gastrointestinal tract, breast, prostate, and pituitary.

#### Source/Purification:

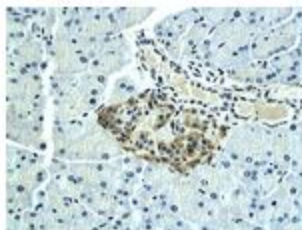
KLH conjugated synthetic peptide derived from human SSTR3 C-terminus. Was purified by Protein A and peptide affinity chromatography.

**Storage:** Prepared as lyophilized powder or liquid and shipped on ice. Store at -20°C for one year.

#### Reconstitution:

If the antibody is in liquid form, no reconstitution needed.

Reconstitution is only required for the lyophilized antibody. Please refer to the reconstitution instruction card in the package.



**Size:** 100ul or 100ug lyophilized

**Concentration:** 1ug/uL

**Host:** Rabbit

**Reactivities:** Human, Mouse, Rat,

#### Application:

- WB(1:100-500)
  - ELISA(1:500-1000)
  - IP(1:20-100)
  - IHC-P(1:100-500)
  - IHC-F(1:100-500)
  - IF(1:100-500)
  - Not yet tested in other applications.
- Optimal working dilutions must be determined by the end user.

**Antibody Type:** Polyclonal

**Isotype:** IgG

**Molecular Weight:** 46kDa

#### Preservatives:

10ug/uL BSA and 0.1% NaN<sub>3</sub>.

For research use only. CAUTION: Not for human or animal therapeutic or diagnostic use.