

• Rabbit Anti-APOH Polyclonal Antibody

Primary Antibodies

Background:

Apolipoprotein H is expressed by placental trophoblast cells at high levels. Although the normal physiological role is not known, the protein appears to act as a co-factor for the binding of autoantibodies to phospholipids to trophoblasts, which is a process involved in the pathogenesis of recurrent miscarriage.

Source/Purification:

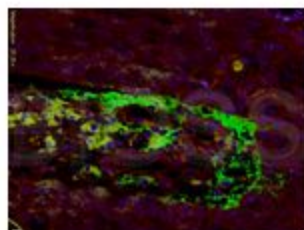
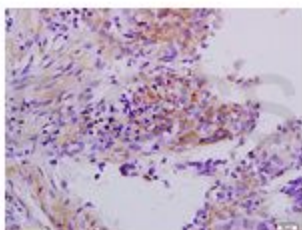
KLH conjugated synthetic peptide derived from human ApoH C-terminus. Was purified by Protein A and peptide affinity chromatography.

Storage: Prepared as lyophilized powder or liquid and shipped on ice. Store at -20°C for one year.

Reconstitution:

If the antibody is in liquid form, no reconstitution needed.

Reconstitution is only required for the lyophilized antibody. Please refer to the reconstitution instruction card in the package.



Size: 100ul or 100ug lyophilized

Concentration: 1ug/uL

Host: Rabbit

Reactivities:

Human, Mouse, Rat, Dog, Cow, Horse, Rabbit,

Application:

- WB(1: 100-500)
- ELISA(1:500-1000)
- IP(1:20-100)
- IHC-P(1: 100-500)
- IHC-F(1: 100-500)
- IF(1: 100-500)
- Not yet tested in other applications.
Optimal working dilutions must be determined by the end user.

Antibody Type: Polyclonal

Isotype: IgG

Molecular Weight: 38kDa

Preservatives:

10ug/uL BSA and 0.1% NaN₃.

For research use only. CAUTION: Not for human or animal therapeutic or diagnostic use.