

• Rabbit Anti-IL-15 Polyclonal Antibody

Primary Antibodies

Background:

IL 15 (114 amino acids) is a cytokine that regulates T and natural killer cell activation and proliferation. It has a predicted molecular mass of approximately 12.5 kDa. Human IL 15 shares approximately 97% and 73% amino acid sequence identity with simian and mouse IL 15, respectively. Both human and simian IL 15 are active on mouse cells. IL 15 was initially isolated from the simian kidney epithelial cell line CV1/EBNA. It has also been isolated from mouse and human cell sources. The cytokines IL 15 and IL 2 share many biological properties and stimulatory activities (T, B, and NK cells). Both IL 15 and IL 2 stimulate mouse CTLL2 cells. In activated peripheral blood T lymphocytes, IL 2 is highly expressed but the expression of IL 15 is not detectable. There is no sequence homology between IL 15 and IL 2, though computer modeling indicates both possess a four alpha helical bundle structure. IL 15 competes for binding sites with IL 2, as both IL 2 and IL 15 stimulate the growth of cells through the IL 2 receptor. IL 15 mRNA is expressed in many cell types and tissues including adherent peripheral blood mononuclear cells, fibroblasts, and epithelial cells, monocytes, placenta, and skeletal muscle.

Source/Purification:

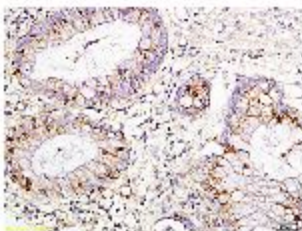
KLH conjugated synthetic peptide derived from human IL-15 C-terminus. Was purified by Protein A and peptide affinity chromatography.

Storage: Prepared as lyophilized powder or liquid and shipped on ice. Store at -20°C for one year.

Reconstitution:

If the antibody is in liquid form, no reconstitution needed.

Reconstitution is only required for the lyophilized antibody. Please refer to the reconstitution instruction card in the package.



Size: 100ul or 100ug lyophilized

Concentration: 1ug/uL

Host: Rabbit

Reactivities: Human, Mouse, Rat,

Application:

- WB(1:100-500)
 - ELISA(1:500-1000)
 - IP(1:20-100)
 - IHC-P(1:100-500)
 - IHC-F(1:100-500)
 - IF(1:100-500)
 - Not yet tested in other applications.
- Optimal working dilutions must be determined by the end user.

Antibody Type: Polyclonal

Isotype: IgG

Molecular Weight: 12.5kDa

Preservatives:

10ug/uL BSA and 0.1% NaN3.

For research use only. CAUTION: Not for human or animal therapeutic or diagnostic use.