

bs-2912R-A350

• Rabbit Anti-LC3B/MAP LC3 β /MAP1A Polyclonal Antibody, Alexa Fluor 350 conjugated

Conjugated Primary Antibodies

Background:

A major contributor to cellular homeostasis is the ability of the cell to strike a balance between the formation and degradation/removal of its cellular components. This process of internal cellular turn-over is called autophagy (self-eating), and is facilitated by a pathway of around 16 interacting proteins in the human. LC3, a ubiquitin-like modifier protein, is the human homolog of yeast Apg8 and is involved in the formation of autophagosomal vacuoles, called autophagosomes. LC3 is expressed as 3 splice variants (LC3A, LC3B and LC3C), which exhibit different tissue distributions and are processed into cytosolic and autophagosomal membrane-bound forms, termed LC3-I and LC3-II, respectively. A disruption to the autophagic process is now associated with the progression of several cancers, neurodegenerative disorders and cardiac pathologies, where LC3 is widely employed as a marker for autophagy.

Purification: Was purified by Protein A and peptide affinity chromatography.

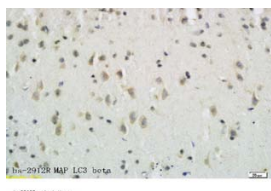
Storage:

Aqueous buffered solution containing 100ug/ml BSA, 50% glycerol and less than 0.09% sodium azide. Store at -20°C for 12 months. Protect from light. [Product without BSA and/or sodium azide is available for special order.]

Reconstitution:

If the antibody is in liquid form, no reconstitution needed.

Reconstitution is only required for the lyophilized antibody. Please refer to the reconstitution instruction card in the package.



bs-2912R-A350

For full size images and description please click [HERE](#).

Size: 100ul

Concentration: 1ug/uL

Host: Rabbit

Reactivities:

Human, Mouse, Rat, Chicken, Dog, Pig, Bovine, Rabbit,

Application:

- IF(1:100-500)
- Not yet tested in other applications. Optimal working dilutions must be determined by the end user.

Antibody Type: Polyclonal

Isotype: IgG

Molecular Weight: 16kDa

Note:

For research use only. CAUTION: Not for human or animal therapeutic or diagnostic use.