

bs-3549R-Biotin

• Rabbit Anti-KSR1 Polyclonal Antibody, Biotin conjugated

Conjugated Primary Antibodies

Background:

KSR1 is a molecular scaffold and positive regulator of the Raf/MEK/ERK phosphorylation cascade. It was initially considered to be a protein kinase acting in the Ras pathway. KSR1 is required for maximal ERK activation induced by growth factors and by some cytotoxic agents. In resting cells, phosphorylated KSR1 is cytoplasmic and in stimulated cells, dephosphorylated KSR1 is membrane associated.

Purification: Was purified by Protein A and peptide affinity chromatography.

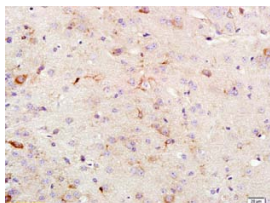
Storage:

Aqueous buffered solution containing 100ug/ml BSA, 50% glycerol and less than 0.09% sodium azide. Store at -20°C for 12 months. [Product without BSA and/or sodium azide is available for special order.]

Reconstitution:

If the antibody is in liquid form, no reconstitution needed.

Reconstitution is only required for the lyophilized antibody. Please refer to the reconstitution instruction card in the package.



For full size images and description please click [HERE](#).

Size: 100ul

Concentration: 1ug/uL

Host: Rabbit

Reactivities:

Human, Mouse, Rat, Chicken, Dog, Pig, Bovine, Rabbit,

Application:

- WB(1:100-500)
- ELISA(1:500-1000)
- IHC-P(1:100-500)
- Not yet tested in other applications.
Optimal working dilutions must be determined by the end user.

Antibody Type: Polyclonal

Isotype: IgG

Molecular Weight: 101kDa

Note:

For research use only. CAUTION: Not for human or animal therapeutic or diagnostic use.