

• Rabbit Anti-phospho-P53(Ser315) Polyclonal Antibody

Primary Antibodies

Background:

p53 plays a major role in the cellular response to DNA damage and other genomic aberrations. The activation of p53 can lead to either cell cycle arrest and DNA repair, or apoptosis. p53 is phosphorylated at multiple sites in vivo and by several different protein kinases in vitro. p53 can apparently be phosphorylated by ATM, ATR, and DNAPK at Ser15; the phosphorylation impairs the ability of MDM2 to bind p53, promoting both the accumulation and functional activation of p53 in response to DNA damage. Chk2 and Chk1 can phosphorylate p53 at Ser20, enhancing its tetramerization, stability and activity. p53 is phosphorylated at Ser392 in vivo and by CAK in vitro. Phosphorylation of p53 at Ser392 is altered in human tumors and has been reported to influence the growth suppressor function, DNA binding and transcriptional activation of p53. p53 is phosphorylated at Ser6 and Ser9 by ck1d and ck1e both in vitro and in vivo. Phosphorylation of p53 at Ser46 is important in regulating the ability of p53 to induce apoptosis. In vivo phosphorylation of p53 at Ser33 by cdk7/cyclin H and in response to UV irradiation has been observed.

Source/Purification:

KLH conjugated synthesised phosphopeptide derived from human P53 around the phosphorylation site of Ser315. Was purified by Protein A and peptide affinity chromatography.

Modification Site:

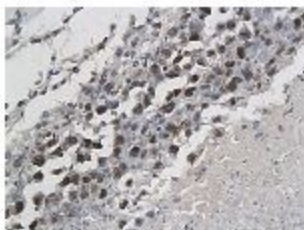
Ser315

Storage: Prepared as lyophilized powder or liquid and shipped on ice. Store at -20°C for one year.

Reconstitution:

If the antibody is in liquid form, no reconstitution needed.

Reconstitution is only required for the lyophilized antibody. Please refer to the reconstitution instruction card in the package.



Size: 100ul or 100ug lyophilized

Concentration: 1ug/uL

Host: Rabbit

Reactivities: Human,

Application:

- WB(1:100-500)
 - ELISA(1:500-1000)
 - IP(1:20-100)
 - IHC-P(1:100-500)
 - IHC-F(1:100-500)
 - IF(1:100-500)
 - Not yet tested in other applications.
- Optimal working dilutions must be determined by the end user.

Antibody Type: Polyclonal

Isotype: IgG

Molecular Weight: 43kDa

Preservatives:

10ug/uL BSA and 0.1% NaN3.

For research use only. CAUTION: Not for human or animal therapeutic or diagnostic use.