

bs-4905R-Cy3

• Rabbit Anti-SORBS2 Polyclonal Antibody, Cy3 conjugated

Conjugated Primary Antibodies

Background:

SORBS2 is an adapter protein that plays a role in the assembling of signaling complexes, being a link between ABL kinases and actin cytoskeleton. It can form a complex with ABL1 and CBL, thus promoting ubiquitination and degradation of ABL1 or with AKT1 and PAK1, thus mediating AKT1-mediated activation of PAK1.

Purification: Was purified by Protein A and peptide affinity chromatography.

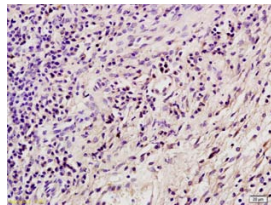
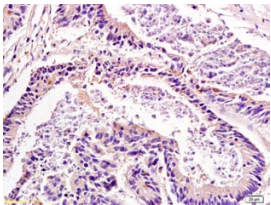
Storage:

Aqueous buffered solution containing 100ug/ml BSA, 50% glycerol and less than 0.09% sodium azide. Store at -20°C for 12 months. Protect from light. [Product without BSA and/or sodium azide is available for special order.]

Reconstitution:

If the antibody is in liquid form, no reconstitution needed.

Reconstitution is only required for the lyophilized antibody. Please refer to the reconstitution instruction card in the package.



For full size images and description please click [HERE](#).

Size: 100ul

Concentration: 1ug/uL

Host: Rabbit

Reactivities:

Human, Mouse, Rat, Chicken, Dog, Pig, Rabbit,

Application:

- IF(1:50-200)
- Not yet tested in other applications. Optimal working dilutions must be determined by the end user.

Antibody Type: Polyclonal

Isotype: IgG

Molecular Weight: 121kDa

Note:

For research use only. CAUTION: Not for human or animal therapeutic or diagnostic use.