

bs-6840R

• Rabbit Anti- IEX1/PRG1 Polyclonal Antibody

Primary Antibodies

Background:

This gene functions in the protection of cells from Fas- or tumor necrosis factor type alpha-induced apoptosis. Partially degraded and unspliced transcripts are found after virus infection in vitro, but these transcripts are not found in vivo and do not generate a valid protein. [provided by RefSeq, Jul 2008].

Source/Purification:

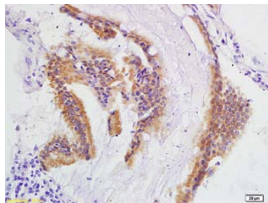
KLH conjugated synthetic peptide derived from human IEX1/Differentiation dependent gene 2 protein. Was purified by Protein A and peptide affinity chromatography.

Storage: Prepared as lyophilized powder or liquid and shipped on ice. Store at -20°C for one year.

Reconstitution:

If the antibody is in liquid form, no reconstitution needed.

Reconstitution is only required for the lyophilized antibody. Please refer to the reconstitution instruction card in the package.



For full size images and description please click [HERE](#).

Size: 100ul or 100ug lyophilized

Concentration: 1ug/uL

Host: Rabbit

Reactivities:

Human, Mouse, Rat, Dog, Pig, Cow, Horse, Rabbit, Sheep,

Application:

- WB(1:100-500)
 - ELISA(1:500-1000)
 - IP(1:20-100)
 - IHC-P(1:100-500)
 - IHC-F(1:100-500)
 - FACS(1:100-500)
 - IF(1:100-500)
 - Not yet tested in other applications.
- Optimal working dilutions must be determined by the end user.

Antibody Type: Polyclonal

Isotype: IgG

Molecular Weight: 17kDa

Preservatives: 10ug/uL BSA and 0.1% NaN₃.

For research use only. CAUTION: Not for human or animal therapeutic or diagnostic use.