

bs-7577R-HRP

• Rabbit Anti-SLC25A6 Polyclonal Antibody, HRP conjugated

Conjugated Primary Antibodies

Background:

SLC25A6 (solute carrier family 25, member A6) participates in the exchange of ADP and ATP across the mitochondrial inner membrane. It may be involved in the formation of the permeability transition pore complex (PTPC), a multiprotein complex built up at the contact site between the inner and the outer mitochondrial membranes. Opening of the PTPC causes massive swelling of mitochondria, rupture of the outer membrane and release of intermembrane components that induce apoptosis.

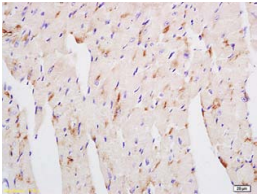
Purification: Was purified by Protein A and peptide affinity chromatography.

Storage: Prepared as lyophilized powder or liquid and shipped on ice. Store at -20°C for one year.

Reconstitution:

If the antibody is in liquid form, no reconstitution needed.

Reconstitution is only required for the lyophilized antibody. Please refer to the reconstitution instruction card in the package.



For full size images and description please click [HERE](#).

Size: 100ul or 100ug lyophilized

Concentration: 1ug/uL

Host: Rabbit

Reactivities:

Human, Mouse, Rat, Chicken, Dog, Pig, Cow, Rabbit, Zebrafish, Sheep,

Application:

- WB(1:100-500)
- ELISA(1:500-1000)
- IHC-P(1:100-500)
- IHC-F(1:100-500)
- Not yet tested in other applications. Optimal working dilutions must be determined by the end user.

Antibody Type: Polyclonal

Isotype: IgG

Molecular Weight: 33kDa

Preservatives: 10ug/uL BSA and 0.01% Gentamicin.

For research use only. CAUTION: Not for human or animal therapeutic or diagnostic use.