

## bs-7577R

### • Rabbit Anti-SLC25A6 Polyclonal Antibody

Primary Antibodies

#### Background:

SLC25A6 (solute carrier family 25, member A6) participates in the exchange of ADP and ATP across the mitochondrial inner membrane. It may be involved in the formation of the permeability transition pore complex (PTPC), a multiprotein complex built up at the contact site between the inner and the outer mitochondrial membranes. Opening of the PTPC causes massive swelling of mitochondria, rupture of the outer membrane and release of intermembrane components that induce apoptosis.

#### Source/Purification:

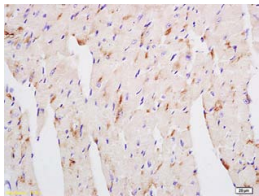
KLH conjugated synthetic peptide derived from human SLC25A6 (65-100aa). Was purified by Protein A and peptide affinity chromatography.

**Storage:** Prepared as lyophilized powder or liquid and shipped on ice. Store at -20°C for one year.

#### Reconstitution:

If the antibody is in liquid form, no reconstitution needed.

Reconstitution is only required for the lyophilized antibody. Please refer to the reconstitution instruction card in the package.



For full size images and description please click [HERE](#).

**Size:** 100ul or 100ug lyophilized

**Concentration:** 1ug/uL

**Host:** Rabbit

#### Reactivities:

Human, Mouse, Rat, Chicken, Dog, Pig, Cow, Rabbit, Zebrafish, Sheep.

#### Application:

- WB(1:100-500)
- ELISA(1:500-1000)
- IP(1:20-100)
- IHC-P(1:100-500)
- IHC-F(1:100-500)
- IF(1:100-500)
- Not yet tested in other applications. Optimal working dilutions must be determined by the end user.

**Antibody Type:** Polyclonal

**Isotype:** IgG

**Molecular Weight:** 33kDa

**Preservatives:** 10ug/uL BSA and 0.1% NaN<sub>3</sub>.

For research use only. CAUTION: Not for human or animal therapeutic or diagnostic use.