

## bs-7580R

### • Rabbit Anti-ZFAND5 Polyclonal Antibody

#### Primary Antibodies

#### Background:

Inhibits NF-kappa-B activation triggered by overexpression of RIPK1 and TRAF6 but not of RELA. Inhibits also tumor necrosis (TNF), IL-1 and TLR4-induced NF-kappa-B activation in a dose-dependent manner. Overexpression sensitizes cells to TNF-induced apoptosis. Could be involved in regulating NF-kappa-B activation and apoptosis. Is a potent inhibitory factor for osteoclast differentiation. Involved in protein degradation via the ubiquitin-proteasome system and plays a critical role in muscle atrophy. May act by anchoring ubiquitinated proteins to the proteasome, playing a critical role in protein degradation.

#### Source/Purification:

KLH conjugated synthetic peptide derived from human ZFAND5. Was purified by Protein A and peptide affinity chromatography.

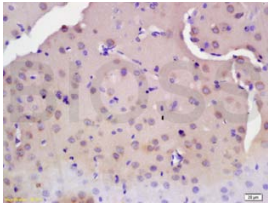
#### Storage:

Aqueous buffered solution containing 100ug/ml BSA, 50% glycerol and less than 0.09% sodium azide. Store at -20°C for 12 months. [Product without BSA and/or sodium azide is available for special order.]

#### Reconstitution:

If the antibody is in liquid form, no reconstitution needed.

Reconstitution is only required for the lyophilized antibody. Please refer to the reconstitution instruction card in the package.



For full size images and description please click [HERE](#).

**Size:** 100ul

**Concentration:** 1ug/uL

**Host:** Rabbit

#### Reactivities:

Human, Mouse, Rat, Chicken, Pig, Bovine, Rabbit, Sheep,

#### Application:

- WB(1:100-500)
- ELISA(1:500-1000)
- IHC-P(1:100-500)
- IF(1:100-500)
- Not yet tested in other applications. Optimal working dilutions must be determined by the end user.

**Antibody Type:** Polyclonal

**Isotype:** IgG

**Molecular Weight:** 23kDa

#### Note:

For research use only. CAUTION: Not for human or animal therapeutic or diagnostic use.