

## bs-7638R-Cy3

### • Rabbit Anti-RHCG Polyclonal Antibody, Cy3 conjugated

Conjugated Primary Antibodies

**Background:**

Functions as an electroneutral and bidirectional ammonium transporter. May regulate transepithelial ammonia secretion.

**Purification:** Was purified by Protein A and peptide affinity chromatography.

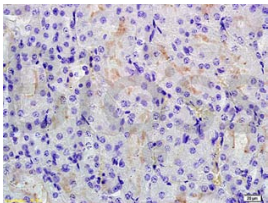
**Storage:**

Prepared as lyophilized powder or liquid and shipped on ice. Store at -20°C for one year. Protect from light.

**Reconstitution:**

If the antibody is in liquid form, no reconstitution needed.

Reconstitution is only required for the lyophilized antibody. Please refer to the reconstitution instruction card in the package.



For full size images and description please click [HERE](#).

**Size:** 100ul or 100ug lyophilized

**Concentration:** 1ug/uL

**Host:** Rabbit

**Reactivities:**

Human, Mouse, Rat, Dog, Pig, Cow, Horse, Rabbit, Sheep,

**Application:**

- IF(1:100-500)
- Not yet tested in other applications.  
Optimal working dilutions must be determined by the end user.

**Antibody Type:** Polyclonal

**Isotype:** IgG

**Molecular Weight:** 53kDa

**Preservatives:** 10ug/uL BSA and 0.1% NaN3.

For research use only. CAUTION: Not for human or animal therapeutic or diagnostic use.