

## bs-9842R-PE-Cy5

### • Rabbit Anti-phospho-LEF1(Ser42) Polyclonal Antibody, PE-Cy5 conjugated

Conjugated Primary Antibodies

#### Background:

Lymphoid enhancer factor, LEF1, is a transcription factor of the High Mobility Group of DNA binding proteins. It is one member of a family of four proteins referred to as LEF/TCF transcription factors (LEF1, TCF1, TCF3 and TCF4). These factors play crucial roles in WNT/Wingless signaling, a signal transduction cascade that directs cell differentiation. Aberrant activation of the WNT/Wingless pathway is also a root cause in the genesis of certain cancers such as colon cancer, melanoma and breast cancer. LEF1 is expressed during development in many different differentiating tissues, and in a few tissues after birth. LEF1 expression is required for proper development of breast, teeth, hair, whiskers and the trigeminal nerve. It is redundant with TCF1 (for T cell Factor 1) for correct development of T lymphocytes in the thymus. LEF1 is a 399 amino acid protein. Alternative splice forms of LEF1 and other LEF/TCF family members have been identified, but the expression pattern and relative abundance of these alternative forms have not been well studied. They can appear on immunoblots as small immunoreactive forms. Subcellular Location : Nucleus (By similarity). Note=Found in nuclear bodies upon PIASG binding (By similarity).

**Purification:** Was purified by Protein A and peptide affinity chromatography.

#### Modification Site:

Ser42

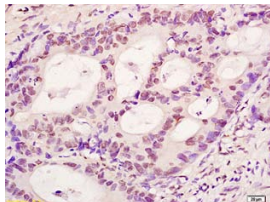
#### Storage:

Prepared as lyophilized powder or liquid and shipped on ice. Store at -20°C for one year. Protect from light.

#### Reconstitution:

If the antibody is in liquid form, no reconstitution needed.

Reconstitution is only required for the lyophilized antibody. Please refer to the reconstitution instruction card in the package.



For full size images and description please click [HERE](#).

**Size:** 100ul or 100ug lyophilized

**Concentration:** 1ug/uL

**Host:** Rabbit

#### Reactivities:

Human, Mouse, Rat, Chicken, Dog, Pig, Cow, Rabbit,

#### Application:

- IF(1:50-200)
- Not yet tested in other applications. Optimal working dilutions must be determined by the end user.

**Antibody Type:** Polyclonal

**Isotype:** IgG

**Molecular Weight:** 44kDa

#### Preservatives:

10ug/uL BSA and 0.1% NaN<sub>3</sub>.

For research use only. CAUTION: Not for human or animal therapeutic or diagnostic use.