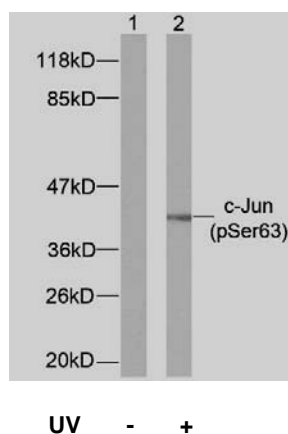


## Rabbit anti c-Jun (pSer63)

- Catalog Number:** pAP11001
- Amount:** 100µl (for 10 Western Blotting)
- Form of Antibody:** Rabbit IgG in phosphate buffered saline (without  $Mg^{2+}$  and  $Ca^{2+}$ ), pH 7.4, 150mM NaCl, 0.02% sodium azide and 50% glycerol.
- Storage/Stability:** Store at -20°C/1 year
- Immunogen:** The antiserum was produced against synthesized phosphopeptide derived from human c-Jun around the phosphorylation site of serine 63 (L-T-S<sup>P</sup>-P-D).
- Purification:** The antibody was affinity-purified from rabbit antiserum by affinity-chromatography using epitope-specific phosphopeptide. The antibody against non-phosphopeptide was removed by chromatography using non-phosphopeptide corresponding to the phosphorylation site.
- Specificity/Sensitivity:** c-Jun (phospho-Ser63) antibody detects endogenous levels of c-Jun only when phosphorylated at serine 63.
- Reactivity:** Human, Mouse
- Applications:** WB: 1:500~1:1000
- Swiss-Prot No. :** P05412
- References:** Wei W, et al. (2005). Cancer Cell. 8(1): 25-33.  
Sevilla A, et al. (2004). Oncogene.23 (55): 8950-8958.  
Li L, et al. (2004). J Biol Chem.279 (6): 4058-4065.  
Hurd C, et al. (2002). Oncogene.21 (14): 2154-2160.



Western blot analysis of extracts from NIH/3T3 cells using c-Jun (phospho-Ser63) antibody (pAP11001)

**For Research Use Only**

Contact & Ordering Information: Angio-Proteomie, 11 Park Drive, Suite 12, Boston, MA 02215, USA. Fax: (480) 247-4337, [angioproteomie@gmail.com](mailto:angioproteomie@gmail.com)