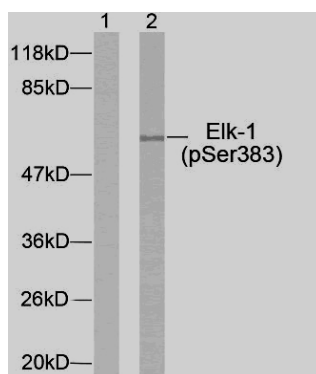


Rabbit anti Elk-1 (pSer383)

- Catalog Number:** pAP11004
- Amount:** 100µl (for 10 Western Blotting)
- Form of Antibody:** Rabbit IgG in phosphate buffered saline (without Mg^{2+} and Ca^{2+}), pH 7.4, 150mM NaCl, 0.02% sodium azide and 50% glycerol.
- Storage/Stability:** Store at -20°C/1 year
- Immunogen:** The antiserum was produced against synthesized phosphopeptide derived from human Elk-1 around the phosphorylation site of serine 383 (T-L-S^P-P-I).
- Purification:** The antibody was affinity-purified from rabbit antiserum by affinity-chromatography using epitope-specific phosphopeptide. The antibody against non-phosphopeptide was removed by chromatography using non-phosphopeptide corresponding to the phosphorylation site.
- Specificity/Sensitivity:** Elk-1 (phospho-Ser383) antibody detects endogenous levels of Elk-1 only when phosphorylated at serine 383.
- Reactivity:** Human, Mouse, Rat
- Applications:** WB: 1:1000
- Swiss-Prot No. :** P19419
- References:** Xing J, et al. (1996) Science. 273(5277): 959-963.
Janknecht R, et al. (1993) EMBO J. 12(13): 5097-5104.
Marais R, et al. (1993) Cell 73: 381-393.
Kortenjann M, et al. (1994) Mol Cell Biol. 14: 4815-4824.
Cavigelli M, et al. (1995) EMBO J. 14: 5957-5964.



Western blot analysis of extract from HeLa cells untreated or treated with UV using Elk-1 (pSer383) antibody (pAP11004).

For Research Use Only

Contact & Ordering Information: Angio-Proteomie, 11 Park Drive, Suite 12, Boston, MA 02215, USA. Fax: (480) 247-4337, angioproteomie@gmail.com