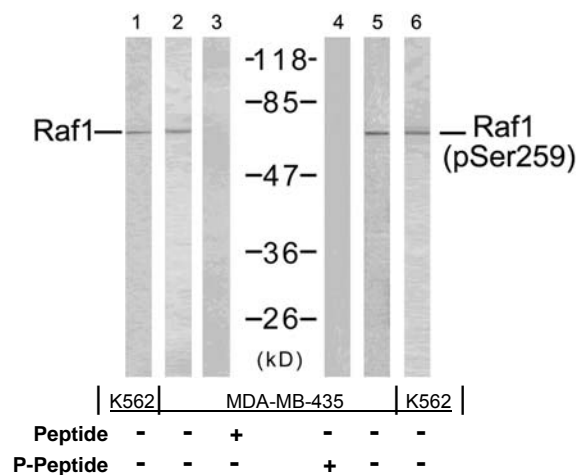




11 Park Drive, Suite 12
Boston, MA 02215

Rabbit anti Raf-1 (pSer259)

- Catalog Number:** pAP11006
Amount: 100µl (10 Western Blotting)
Form of Antibody: Rabbit IgG in phosphate buffered saline (without Mg²⁺ and Ca²⁺), pH 7.4, 150mM NaCl, 0.02% sodium azide and 50% glycerol.
Storage/Stability: Store at -20°C/1 year
Immunogen: The antiserum was produced against synthesized phosphopeptide derived from human Raf-1 around the phosphorylation site of serine 259 (S-T-S^P-T-P).
Purification: The antibody was affinity-purified from rabbit antiserum by affinity-chromatography using epitope-specific phosphopeptide. The antibody against non-phosphopeptide was removed by chromatography using non-phosphopeptide corresponding to the phosphorylation site.
Specificity/Sensitivity: Raf-1 (phospho-Ser259) antibody detects endogenous levels of Raf-1 only when phosphorylated at serine 259.
Reactivity: Human, Mouse, Rat
Applications: WB: 1:1000
Swiss-Prot No. : P04049
References: Dougherty M K, et al. (2005) Mol Cell. 17(2): 215-224.
Hekman M, et al. (2005) FEBS Lett. 579(2): 464-468.
Avruch J, et al. (1994) Trends Biochem. Sci. 19, 279-283.
Chong H, et al. (2001) EMBO J. 20, 3716-3727.
King A J, et al. (1998) Nature. 396:180-183.



Western blot analysis of extracts using Raf-1 (Ab-259) antibody (AP21006, Line 1, 2, and 3) and Raf-1 (phospho- Ser259) antibody (pAP11006, Line 4, 5, and 6).

For Research Use Only

Contact & Ordering Information: Angio-Proteomie, 11 Park Drive, Suite 12, Boston, MA 02215, USA. Fax: (480) 247-4337, angioproteomie@gmail.com