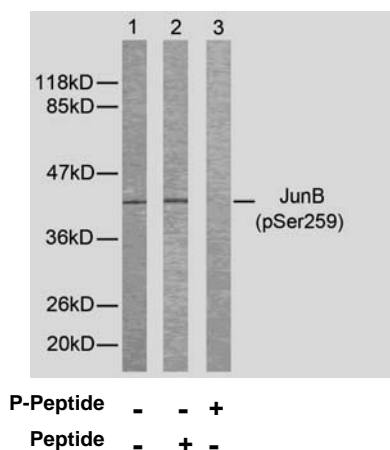




11 Park Drive, Suite 12  
Boston, MA 02215

## Rabbit anti Jun-B (pSer259)

- Catalog Number:** pAP11027
- Amount:** 100µl (for 10 Western Blotting)
- Form of Antibody:** Rabbit IgG in phosphate buffered saline (without  $Mg^{2+}$  and  $Ca^{2+}$ ), pH 7.4, 150mM NaCl, 0.02% sodium azide and 50% glycerol.
- Storage/Stability:** Store at -20°C/1 year
- Immunogen:** The antiserum was produced against synthesized phosphopeptide derived from human JunB around the phosphorylation site of serine 259 (P-V-S<sup>P</sup>-P-I).
- Purification:** The antibody was affinity-purified from rabbit antiserum by affinity-chromatography using epitope-specific phosphopeptide. The antibody against non-phosphopeptide was removed by chromatography using non-phosphopeptide corresponding to the phosphorylation site.
- Specificity/Sensitivity:** JunB (phospho-Ser259) antibody detects endogenous levels of JunB only when phosphorylated at serine 259.
- Reactivity:** Human, Mouse, Rat
- Applications:** WB: 1:1000
- Swiss-Prot No. :** P17275
- References:** Beausoleil S A, et al. (2004) Proc Natl Acad Sci U S A. 101(33): 12130-12135.



Western blot analysis of extracts from HeLa cells using JunB (phospho-Ser259) antibody (pAP11027).

**For Research Use Only**

Contact & Ordering Information: Angio-Proteomie, 11 Park Drive, Suite 12, Boston, MA 02215, USA. Fax: (480) 247-4337, [angioproteomie@gmail.com](mailto:angioproteomie@gmail.com)