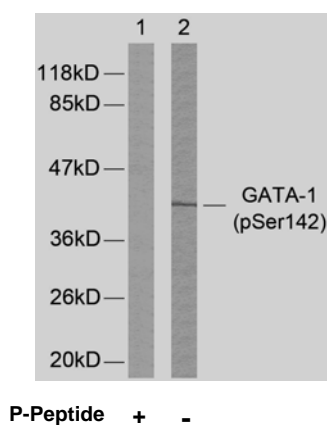


Rabbit anti GATA-1 (pSer142)

- Catalog Number:** pAP11041
Amount: 100µl (for 10 Western Blotting)
Form of Antibody: Rabbit IgG in phosphate buffered saline (without Mg^{2+} and Ca^{2+}), pH 7.4, 150mM NaCl, 0.02% sodium azide and 50% glycerol.
Storage/Stability: Store at -20°C/1 year
Immunogen: The antiserum was produced against synthesized phosphopeptide derived from human GATA-1 around the phosphorylation site of serine 142 (R-L-S^P-P-D).
Purification: The antibody was affinity-purified from rabbit antiserum by affinity-chromatography using epitope-specific phosphopeptide. The antibody against non-phosphopeptide was removed by chromatography using non-phosphopeptide corresponding to the phosphorylation site.
Specificity/Sensitivity: GATA-1 (phospho-Ser142) antibody detects endogenous levels of GATA-1 only when phosphorylated at serine 142.
Reactivity: Human, Mouse, Rat
Applications: WB: 1:1000
Swiss-Prot No. : P15976
References: Zon LI, et al. (1990) Proc Natl Acad. Sci USA. 87: 668-672.
Trainor C D, et al. (1990) Nature. 343: 92-96.
Nichols K E, et al. (2000) Nat Genet. 24: 266-270.



Western blot analysis of extracts from K562 cells using GATA-1 (phospho-Ser142) antibody (pAP11041).

For Research Use Only

Contact & Ordering Information: Angio-Proteomie, 11 Park Drive, Suite 12, Boston, MA 02215, USA. Fax: (480) 247-4337, angioproteomie@gmail.com