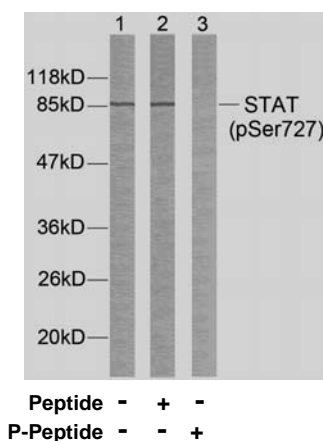


Rabbit anti STAT-3 (pSer727)

- Catalog Number:** pAP11046
- Amount:** 100µl (for 10 Western Blotting)
- Form of Antibody:** Rabbit IgG in phosphate buffered saline (without Mg^{2+} and Ca^{2+}), pH 7.4, 150mM NaCl, 0.02% sodium azide and 50% glycerol.
- Storage/Stability:** Store at -20°C/1 year
- Immunogen:** The antiserum was produced against synthesized phosphopeptide derived from human STAT3 around the phosphorylation site of serine 727 (P-M-S^P-P-R).
- Purification:** The antibody was affinity-purified from rabbit antiserum by affinity-chromatography using epitope-specific phosphopeptide. The antibody against non-phosphopeptide was removed by chromatography using non-phosphopeptide corresponding to the phosphorylation site.
- Specificity/Sensitivity:** STAT3 (phospho-Ser727) antibody detects endogenous levels of STAT3 only when phosphorylated at serine 727.
- Reactivity:** Human, Mouse, Rat
- Applications:** WB: 1:1000
- Swiss-Prot No. :** P40763
- References:** Heim M H, (1999) J Recept Signal Transduct Res. 19: 75-120.
Takeda K, et al. (1997) Proc Natl Acad Sci USA. 94: 3801-3804.
Catlett-Falcone R, et al. (1999) Immunity. 10: 105-115.



Western blot analysis of extracts from HeLa cells using STAT3 (phospho-Ser727) antibody (pAP11046).

For Research Use Only

Contact & Ordering Information: Angio-Proteomie, 11 Park Drive, Suite 12, Boston, MA 02215, USA. Fax: (480) 247-4337, angioproteomie@gmail.com