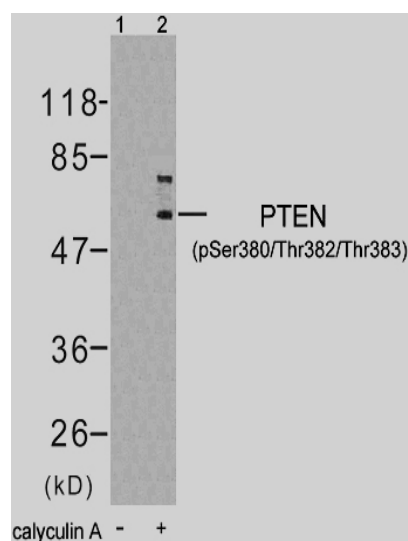


Rabbit anti PTEN (pSer380/pThr382/pThr383)

- Catalog Number:** pAP11056
Amount: 100µl (for 10 Western Blotting)
Form of Antibody: Rabbit IgG in phosphate buffered saline (without Mg²⁺ and Ca²⁺), pH 7.4, 150mM NaCl, 0.02% sodium azide and 50% glycerol.
Storage/Stability: Store at -20°C/1 year
Immunogen: The antiserum was produced against synthesized phosphopeptide derived from human PTEN around the phosphorylation site of serine 380 and threonine 382/383 (R-Y-S^P-D-T^P-T^P-D-S).
Purification: The antibody was affinity-purified from rabbit antiserum by affinity-chromatography using epitope-specific phosphopeptide. The antibody against non-phosphopeptide was removed by chromatography using non-phosphopeptide corresponding to the phosphorylation site.
Specificity/Sensitivity: PTEN (phospho-Ser380/Thr382/Thr383) antibody detects endogenous levels of PTEN only when phosphorylated at serine 380 and threonine 382/383.
Reactivity: Human, Mouse, Rat
Applications: WB: 1:1000
Swiss-Prot No. : P60484
References: Al-Khouri AM, et al. (2005) J Biol Chem. 280(42):35195-35202.
 Torres J, et al. (2001) J Biol Chem. 276(2): 993-998.
 Vazquez F, et al. (2000) Mol Cell Biol. 20(14): 5010-5018.



Western blot analysis of extract from HT29 cells untreated or treated with calyculin A, using PTEN (phospho-Ser380/Thr382/Thr383) antibody (pAP11056).

For Research Use Only

Contact & Ordering Information: Angio-Proteomie, 11 Park Drive, Suite 12, Boston, MA 02215, USA. Fax: (480) 247-4337, angioproteomie@gmail.com