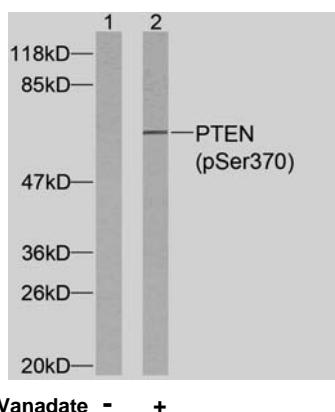


Rabbit anti PTEN (pSer370)

- Catalog Number:** pAP11062
Amount: 100µl (for 10 Western Blotting)
Form of Antibody: Rabbit IgG in phosphate buffered saline (without Mg^{2+} and Ca^{2+}), pH 7.4, 150mM NaCl, 0.02% sodium azide and 50% glycerol.
Storage/Stability: Store at -20°C/1 year
Immunogen: The antiserum was produced against synthesized phosphopeptide derived from human PTEN around the phosphorylation site of serine 370 (D-V-S^P-D-N).
Purification: The antibody was affinity-purified from rabbit antiserum by affinity-chromatography using epitope-specific phosphopeptide. The antibody against non-phosphopeptide was removed by chromatography using non-phosphopeptide corresponding to the phosphorylation site.
Specificity/Sensitivity: PTEN (phospho-Ser370) antibody detects endogenous levels of PTEN only when phosphorylated at serine 370.
Reactivity: Human, Mouse, Rat
Applications: WB: 1:1000
Swiss-Prot No. : P60484
References: Al-Khouri AM, et al. (2005). J Biol Chem.280 (42):35195-35202.
Miller SJ, et al. (2002). FEBS Lett. 528(1-3): 145-153.
Torres J, et al. (2001). J Biol Chem.276 (2): 993-998.
Vazquez F, et al. (2000). Mol Cell Biol.20 (14): 5010-5018.



Western blot analysis of extracts from HeLa cells using PTEN (phospho-Ser370) antibody (pAP11062).

For Research Use Only

Contact & Ordering Information: Angio-Proteomie, 11 Park Drive, Suite 12, Boston, MA 02215, USA. Fax: (480) 247-4337, angioproteomie@gmail.com