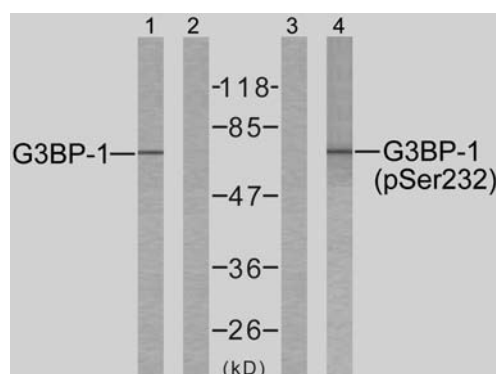


Rabbit anti G3BP-1 (pSer232)

- Catalog Number:** pAP11082
Amount: 100µl (for 10 Western Blotting)
Form of Antibody: Rabbit IgG in phosphate buffered saline (without Mg²⁺ and Ca²⁺), pH 7.4, 150mM NaCl, 0.02% sodium azide and 50% glycerol.
Storage/Stability: Store at -20°C/1 year
Immunogen: The antiserum was produced against synthesized phosphopeptide derived from human G3BP-1 around the phosphorylation site of serine 232 (S-S^P-P-A).
Purification: The antibody was affinity-purified from rabbit antiserum by affinity-chromatography using epitope-specific phosphopeptide. The antibody against non-phosphopeptide was removed by chromatography using non-phosphopeptide corresponding to the phosphorylation site.
Specificity/Sensitivity: G3BP-1 (phospho-Ser232) antibody detects endogenous levels of G3BP-1 only when phosphorylated at serine 232.
Reactivity: Human
Applications: WB: 1:1000
Swiss-Prot No. : Q13283
References: Tao WA, et al. (2005) Nat Methods. 2(8): 591-598.
 Zheng H, et al. (2005) Mol Cell Proteomics. 4(6):721-730.
 Beausoleil SA, et al. (2004) Proc Natl Acad Sci U S A. 101 (33): 12130-12135.
 Tourrihre H, et al. (2003) J Cell Biol. 160 (6): 823-831.



P-Peptide	-	-	+	-
Peptide	-	+	-	-

Western blot analysis of extracts from 293 cells using G3BP-1 (Ab-232) antibody (AP21102, Lane 1 and 2) and G3BP-1 (phospho-Ser232) antibody (pAP11082, Lane 3 and 4).

For Research Use Only

Contact & Ordering Information: Angio-Proteomie, 11 Park Drive, Suite 12, Boston, MA 02215, USA. Fax: (480) 247-4337, angioproteomie@gmail.com