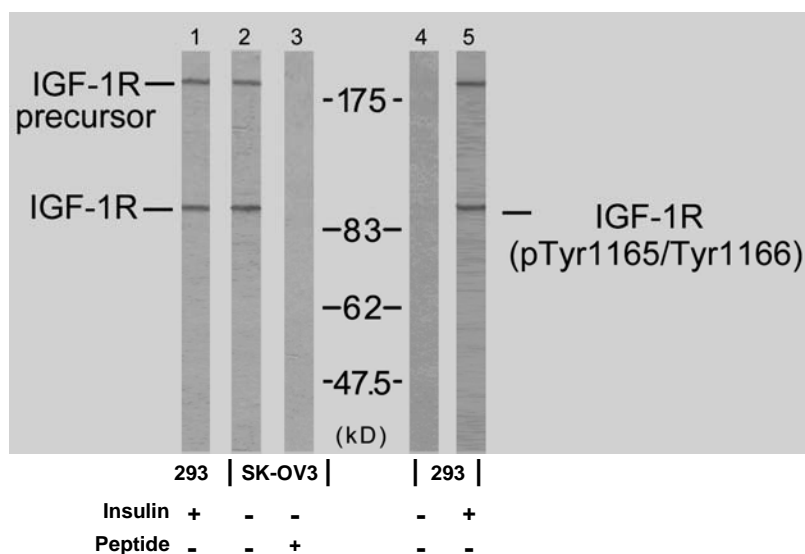


Rabbit anti IGF-1R (pTyr1165/1166)

- Catalog Number:** pAP11088
Amount: 100µl (for 10 westerb Blotting)
Form of Antibody: Rabbit IgG in phosphate buffered saline (without Mg²⁺ and Ca²⁺), pH 7.4, 150mM NaCl, 0.02% sodium azide and 50% glycerol.
Storage/Stability: Store at -20°C/1 year
Immunogen: The antiserum was produced against synthesized phosphopeptide derived from human IGF-1R around the phosphorylation site of tyrosine 1165/tyrosine 1166 (T-D-Y^P-Y^P-R-K).
Purification: The antibody was affinity-purified from rabbit antiserum by affinity-chromatography using epitope-specific phosphopeptide. The antibody against non-phosphopeptide was removed by chromatography using non-phosphopeptide corresponding to the phosphorylation site.
Specificity/Sensitivity: IGF-1R (phospho-Tyr1165/Tyr1166) antibody detects endogenous levels of IGF-1R only when phosphorylated at tyrosine 1165/tyrosine1166.
Reactivity: Human, Mouse, Rat
Applications: WB: 1:1000
Swiss-Prot No. : P08069
References: Li S, et al. (1994) J Biol Chem; 269(51): 32558-64.



Western blot analysis using IGF-1R (Ab-1165/1166) antibody (AP21081, Line 1, 2 and 3) and IGF-1R (phospho-Tyr1165/Tyr1166) antibody (pAP11088, Line 4 and 5).

For Research Use Only

Contact & Ordering Information: Angio-Proteomie, 11 Park Drive, Suite 12, Boston, MA 02215, USA. Fax: (480) 247-4337, angioproteomie@gmail.com