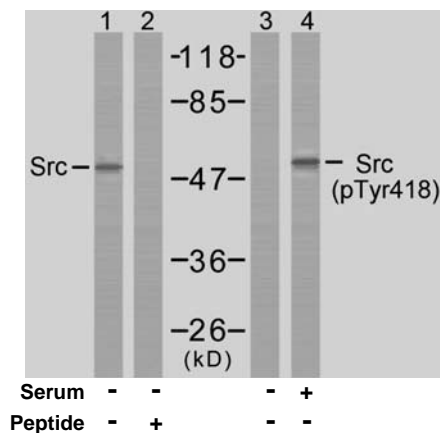




11 Park Drive, Suite 12
Boston, MA 02215

Rabbit anti Src (pTyr418)

- Catalog Number:** pAP11091
Amount: 100µl (for 10 Western Blotting)
Form of Antibody: Rabbit IgG in phosphate buffered saline (without Mg²⁺ and Ca²⁺), pH 7.4, 150mM NaCl, 0.02% sodium azide and 50% glycerol.
Storage/Stability: Store at -20°C/1 year
Immunogen: The antiserum was produced against synthesized phosphopeptide derived from human Src around the phosphorylation site of tyrosine 418 (N-E-Y^P-T-A).
Purification: The antibody was affinity-purified from rabbit antiserum by affinity-chromatography using epitope-specific phosphopeptide. The antibody against non-phosphopeptide was removed by chromatography using non-phosphopeptide corresponding to the phosphorylation site.
Specificity/Sensitivity: Src (phospho-Tyr418) antibody detects endogenous levels of Src only when phosphorylated at tyrosine 418.
Reactivity: Human, Mouse, Rat
Applications: WB: 1:1000
Swiss-Prot No. : P12931
References: Dufilho M, et al. (2005) J Biol Chem. 280(43):35999-36006.
Sanders MA, et al. (2005) J Biol Chem. 280(25): 23516-23522.
Murugappan S, et al. (2005) Blood. 106(2):550-557.
Gu JJ, et al. (2005) Blood. 105(8): 3270-3277.



Western blot analysis of extracts from COLO205 cells using Src (Ab-418) antibody (AP21115, Lane 1 and 2) and Src (phospho-Tyr418) antibody (pAP11091, Lane 3 and 4).

For Research Use Only

Contact & Ordering Information: Angio-Proteomie, 11 Park Drive, Suite 12, Boston, MA 02215, USA. Fax: (480) 247-4337, angioproteomie@gmail.com