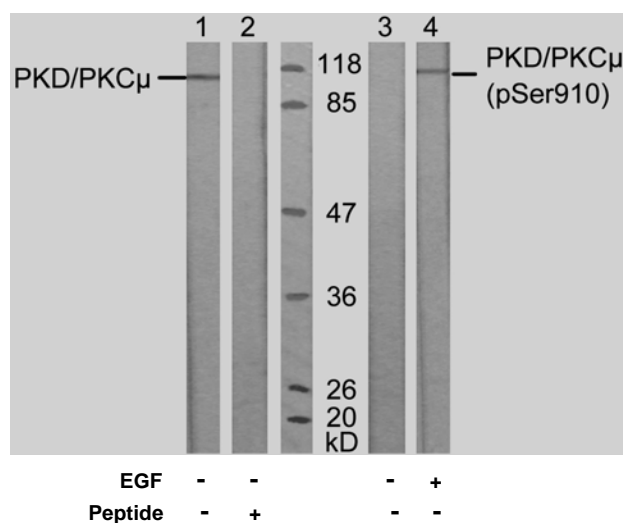


Rabbit anti PKD/PKC μ (pSer910)

- Catalog Number:** pAP11096
Amount: 100 μ l (for 10 Western Blotting)
Swiss-Prot No. : Q15139
Form of Antibody: Rabbit IgG in phosphate buffered saline (without Mg²⁺ and Ca²⁺), pH 7.4, 150mM NaCl, 0.02% sodium azide and 50% glycerol.
Storage/Stability: Store at -20°C/1 year
Immunogen: The antiserum was produced against synthesized phosphopeptide derived from human PKD/PKC μ around the phosphorylation site of serine 910 (R-V-S^P-I-L).
Purification: The antibody was affinity-purified from rabbit antiserum by affinity-chromatography using epitope-specific phosphopeptide. The antibody against non-phosphopeptide was removed by chromatography using non-phosphopeptide corresponding to the phosphorylation site.
Specificity/Sensitivity: PKD/PKC μ (phospho-Ser910) antibody detects endogenous levels of PKD/PKC μ only when phosphorylated at serine 910.
Reactivity: Human, Mouse, Rat
Applications: WB: 1:1000
References: Matthews SA, et al. J Biol Chem 1999 Sep; 274(37): 26543-26549
Brandlin I, et al. J Biol Chem 2002 Feb; 277(8): 6490-6496
Storz P, et al. Mol Pharmacol 2004 Oct; 66(4): 870-879



Western blot analysis of extract from A431 cells, untreated or treated with EGF (200ng/ml, 10min), using PKD/PKC μ (Ab-910) antibody (AP21128, Lane 1 and 2) and PKD/PKC μ (phospho-Ser910) antibody (pAP11096, Lane 3 and 4).

For Research Use Only

Contact & Ordering Information: Angio-Proteomie, 11 Park Drive, Suite 12, Boston, MA 02215, USA. Fax: (480) 247-4337, angioproteomie@gmail.com