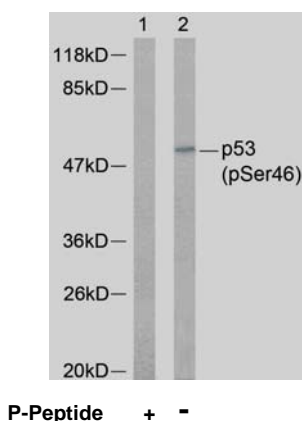


Rabbit anti P53 (pSer46)

- Catalog Number:** pAP11099
Amount: 100µl (for 10 Western Blotting)
Form of Antibody: Rabbit IgG in phosphate buffered saline (without Mg^{2+} and Ca^{2+}), pH 7.4, 150mM NaCl, 0.02% sodium azide and 50% glycerol.
Storage/Stability: Store at -20°C/1 year
Immunogen: The antiserum was produced against synthesized phosphopeptide derived from human p53 around the phosphorylation site of serine 46 (M-L-S^P-P-D).
Purification: The antibody was affinity-purified from rabbit antiserum by affinity-chromatography using epitope-specific phosphopeptide. The antibody against non-phosphopeptide was removed by chromatography using non-phosphopeptide corresponding to the phosphorylation site.
Specificity/Sensitivity: p53 (phospho-Ser46) antibody detects endogenous levels of p53 only when phosphorylated at serine 46.
Reactivity: Human
Applications: WB: 1:1000
Swiss-Prot No. : P04637
References: Dhavan, R. and Tsai, L.H. (2001) Nat Rev Mol Cell Biol. 2: 749-759.
Patrick, G. N. et al. (1998) J Biol Chem. 273: 24057-24064.
Di Stefano V, et al. (2005) Oncogene. 24(35):5431-5442.
Mayo LD, et al.(2005) J Biol Chem. 280(28):25953-25959.



Western blot analysis of extracts from 293 cells, using p53 (phospho-Ser46) antibody (pAP11099).

For Research Use Only

Contact & Ordering Information: Angio-Proteomie, 11 Park Drive, Suite 12, Boston, MA 02215, USA. Fax: (480) 247-4337, angioproteomie@gmail.com