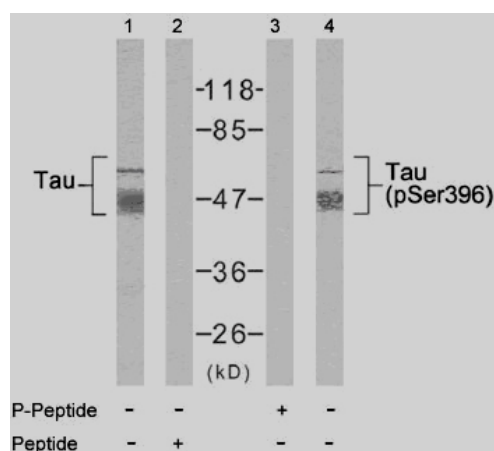


Rabbit anti Tau (pSer396)

- Catalog Number:** pAP11102
Amount: 100µl (for 10 Western Blotting)
Form of Antibody: Rabbit IgG in phosphate buffered saline (without Mg²⁺ and Ca²⁺), pH 7.4, 150mM NaCl, 0.02% sodium azide and 50% glycerol.
Storage/Stability: Store at -20°C/1 year
Immunogen: The antiserum was produced against synthesized phosphopeptide derived from human Tau around the phosphorylation site of serine 396 (Y-K-S^P-P-V).
Purification: The antibody was affinity-purified from rabbit antiserum by affinity-chromatography using epitope-specific phosphopeptide. The antibody against non-phosphopeptide was removed by chromatography using non-phosphopeptide corresponding to the phosphorylation site.
Specificity/Sensitivity: Tau (phospho-Ser396) antibody detects endogenous levels of Tau only when phosphorylated at serine396.
Reactivity: Human, Mouse, Rat
Applications: WB: 1:1000
Swiss-Prot No. : P10636
References: Puig B, et al. (2005) Acta Neuropathol (Berl). 110(3):261-268.
 DeGiorgis JA, et al. (2005) J Proteome Res. 4(2): 306-315.
 Alonso Adel C, et al. (2004) J Biol Chem. 279(33): 34873-34881.
 Kyriakis J M, et al. (1994) Nature. 369: 156-160.



Western blot analysis of extract from mouse brain tissue using Tau (Ab-396) antibody (AP21093, Lane 1 and 2) and Tau (phospho- Ser396) antibody (pAP11102, Lane 3 and 4).

For Research Use Only

Contact & Ordering Information: Angio-Proteomie, 11 Park Drive, Suite 12, Boston, MA 02215, USA. Fax: (480) 247-4337, angioproteomie@gmail.com