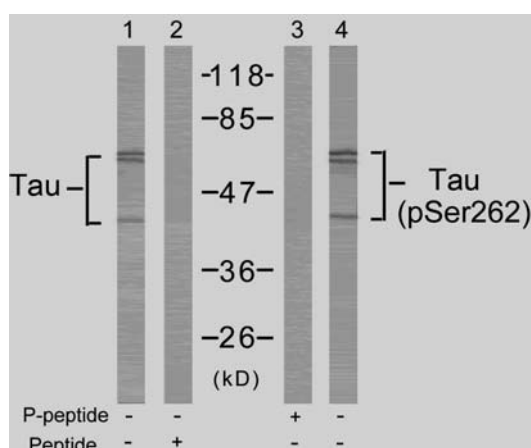


## Rabbit anti Tau (pSer262)

- Catalog Number:** pAP11111
- Amount:** 100µl (for 10 Western Blotting)
- Form of Antibody:** Rabbit IgG in phosphate buffered saline (without  $Mg^{2+}$  and  $Ca^{2+}$ ), pH 7.4, 150mM NaCl, 0.02% sodium azide and 50% glycerol.
- Storage/Stability:** Store at -20°C/1 year
- Immunogen:** The antiserum was produced against synthesized phosphopeptide derived from human Tau around the phosphorylation site of serine 262 (I-G-S<sup>P</sup>-T-E).
- Purification:** The antibody was affinity-purified from rabbit antiserum by affinity-chromatography using epitope-specific phosphopeptide. The antibody against non-phosphopeptide was removed by chromatography using non-phosphopeptide corresponding to the phosphorylation site.
- Specificity/Sensitivity:** Tau (phospho-Ser262) antibody detects endogenous levels of Tau only when phosphorylated at serine 262.
- Reactivity:** Human, Mouse, Rat
- Applications:** WB: 1:1000
- Swiss-Prot No. :** P10636
- References:** Timm T, et al. (2003) EMBO J; 22(19): 5090-5101.



Western blot analysis of extracts from mouse brain tissue using Tau (Ab-262) antibody (AP21100, Lane 1 and 2) and Tau (phospho-Ser262) antibody (pAP11111, Lane 3 and 4).

**For Research Use Only**

Contact & Ordering Information: Angio-Proteomie, 11 Park Drive, Suite 12, Boston, MA 02215, USA. Fax: (480) 247-4337, [angioproteomie@gmail.com](mailto:angioproteomie@gmail.com)