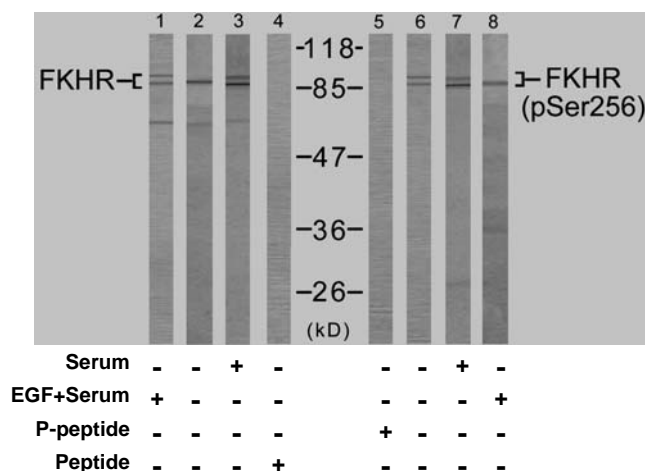


Rabbit anti FKHR (pSer256)

- Catalog Number:** pAP11115
Amount: 100µl (for 10 Western Blotting)
Form of Antibody: Rabbit IgG in phosphate buffered saline (without Mg²⁺ and Ca²⁺), pH 7.4, 150mM NaCl, 0.02% sodium azide and 50% glycerol.
Storage/Stability: Store at -20°C/1 year
Immunogen: The antiserum was produced against synthesized phosphopeptide derived from human FKHR around the phosphorylation site of serine 256 (A-A-S^P-M-D).
Purification: The antibody was affinity-purified from rabbit antiserum by affinity-chromatography using epitope-specific phosphopeptide. The antibody against non-phosphopeptide was removed by chromatography using non-phosphopeptide corresponding to the phosphorylation site.
Specificity/Sensitivity: FKHR (phospho-Ser256) antibody detects endogenous levels of FKHR only when phosphorylated at serine 256.
Reactivity: Human, Mouse, Rat
Applications: WB: 1:1000
Swiss-Prot No. : Q12778
References: Gan L, et al. (2005) J Neurochem; 93(5): 1209-19.
 Smith WW, et al. (2005) J Cell Biol; 169(2): 331-9.
 Di Maira G, et al. (2005) Cell Death Differ; 12(6): 668-77.
 Horn S, et al. (2004) Leukemia; 18(11): 1839-49.



Western blot analysis using FKHR (Ab-256) antibody (AP21138, Lane 1, 2, 3 and 4) and FKHR (phospho-Ser256) antibody (pAP11115, Lane 5, 6, 7 and 8).

For Research Use Only

Contact & Ordering Information: Angio-Proteomie, 11 Park Drive, Suite 12, Boston, MA 02215, USA. Fax: (480) 247-4337, angioproteomie@gmail.com