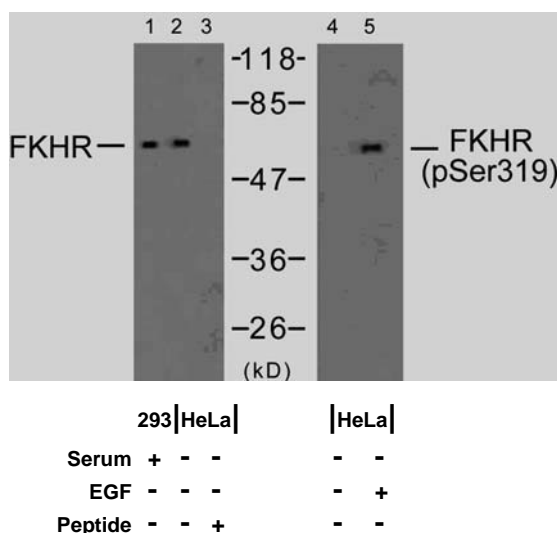


Rabbit anti FKHR (pSer319)

- Catalog Number:** pAP11136
Amount: 100µl (for 10 Western Blotting)
Swiss-Prot No. : Q12778
All Names: FKHR, FOXO1, Forkhead box protein O1A, Forkhead in rhabdomyosarcoma
All Sites: Human: Ser319; Mouse: Ser316; Rat: Ser313
Form of Antibody: Rabbit IgG in phosphate buffered saline (without Mg²⁺ and Ca²⁺), pH 7.4, 150mM NaCl, 0.02% sodium azide and 50% glycerol.
Storage/Stability: Store at -20°C/1 year
Immunogen: The antiserum was produced against synthesized phosphopeptide derived from human FKHR around the phosphorylation site of serine 319 (T-S-S^P-N-A).
Purification: The antibody was affinity-purified from rabbit antiserum by affinity-chromatography using epitope-specific phosphopeptide. The antibody against non-phosphopeptide was removed by chromatography using non-phosphopeptide corresponding to the phosphorylation site.
Specificity/Sensitivity: FKHR (phospho-Ser319) antibody detects endogenous levels of FKHR only when phosphorylated at serine 319.
Reactivity: Human, Mouse, Rat
Applications: WB: 1:1000
References: Rena G, et al. (2002) EMBO J 21(9): 2263-2271.
Woods YL, et al. (2001) Biochem J 355(Pt 3): 597-607.
Rena G, et al. (2001) Biochem J 354(Pt 3): 605-612.



Western blot analysis of extracts from 293 cells (10% serum-treated, 15min) and HeLa cells (EGF-treated, 200ng/ml, 15min), using FKHR (Ab-319) antibody (AP21161, Lane 1, 2 and 3) and FKHR (phospho-Ser319) antibody (pAP11136, Lane 4 and 5).

For Research Use Only

Contact & Ordering Information: Angio-Proteomie, 11 Park Drive, Suite 12, Boston, MA 02215, USA. Fax: (480) 247-4337, angioproteomie@gmail.com