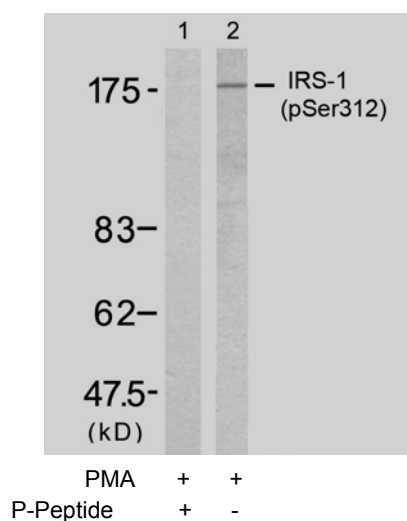


## Rabbit anti IRS-1 (pSer312)

- Catalog Number:** pAP11143  
**Amount:** 100µl (for 10 Western Blotting)  
**Swiss-Prot No. :** P35568  
**Form of Antibody:** Rabbit IgG in phosphate buffered saline (without Mg<sup>2+</sup> and Ca<sup>2+</sup>), pH 7.4, 150mM NaCl, 0.02% sodium azide and 50% glycerol.  
**Storage/Stability:** Store at -20°C/1 year  
**Immunogen:** The antiserum was produced against synthesized phosphopeptide derived from human IRS-1 around the phosphorylation site of serine 312 (A-T-S<sup>P</sup>-P-A).  
**Purification:** The antibody was affinity-purified from rabbit antiserum by affinity-chromatography using epitope-specific phosphopeptide. The antibody against non-phosphopeptide was removed by chromatography using non-phosphopeptide corresponding to the phosphorylation site.  
**Specificity/Sensitivity:** IRS-1(Phospho-Ser312) antibody detects endogenous levels of IRS-1 only when phosphorylated at serine 312.  
**Reactivity:** Human, Mouse, Rat  
**Applications:** WB: 1:1000  
**References:** Tzatsos A, et al. (2006) Mol Cell Biol; 26(1): 63-76  
 Ozes ON, et al. (2001) Proc Natl Acad Sci U S A; 98(8): 4640-4645  
 Szanto I, et al. (2000) Proc Natl Acad Sci U S A; 97(5): 2355-2360  
 Ozes ON, et al. (2001) Proc Natl Acad Sci U S A; 98(8): 4640-4645



Western blot analysis of extract from 293 cells, using IRS-1 (Phospho-Ser312) antibody (pAP11143, Lane 1 and 2).

**For Research Use Only**

Contact & Ordering Information: Angio-Proteomie, 11 Park Drive, Suite 12, Boston, MA 02215, USA. Fax: (480) 247-4337, [angioproteomie@gmail.com](mailto:angioproteomie@gmail.com)