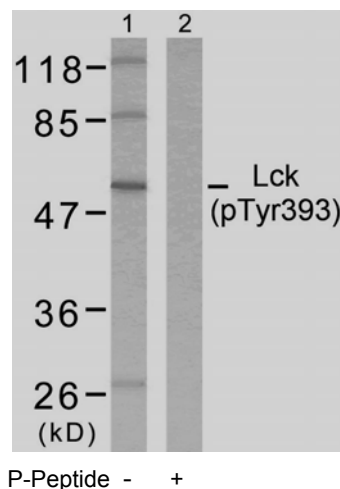




11 Park Drive, Suite 12
Boston, MA 02215

Rabbit anti Lck (pTyr393)

- Catalog Number:** pAP11144
Amount: 100µl (for 10 Western Blotting)
Swiss-Prot No. : P06239
Form of Antibody: Rabbit IgG in phosphate buffered saline (without Mg²⁺ and Ca²⁺), pH 7.4, 150mM NaCl, 0.02% sodium azide and 50% glycerol.
Storage/Stability: Store at -20°C/1 year
Immunogen: The antiserum was produced against synthesized phosphopeptide derived from human Lck around the phosphorylation site of tyrosine 393 (N-E-Y^P-T-A).
Purification: The antibody was affinity-purified from rabbit antiserum by affinity-chromatography using epitope-specific phosphopeptide. The antibody against non-phosphopeptide was removed by chromatography using non-phosphopeptide corresponding to the phosphorylation site.
Specificity/Sensitivity: Lck (phospho-Tyr393) antibody detects endogenous levels of Lck only when phosphorylated at tyrosine 393.
Reactivity: Human, Mouse, Rat
Applications: WB: 1:1000
References: Heck E, et al. (2006) J Virol. Oct; 80(20): 9934-9942
Michie AM, et al. (2000) Mol Biol Cell. May; 11(5): 1585-1595



Western blot analysis of extracts from MOLT cells using Lck (phospho-Tyr393) antibody (pAP11144).

For Research Use Only

Contact & Ordering Information: Angio-Proteomie, 11 Park Drive, Suite 12, Boston, MA 02215, USA. Fax: (480) 247-4337, angioproteomie@gmail.com