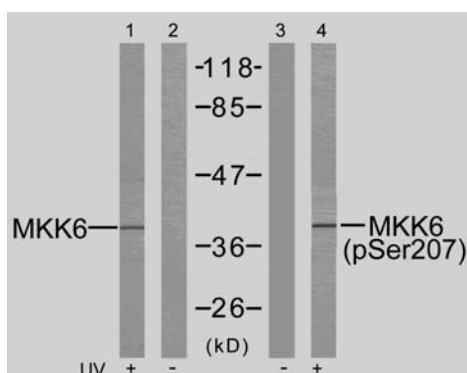


## Rabbit anti MKK-6 (pSer207)

- Catalog Number:** pAP11146  
**Amount:** 100µl (for 10 Western Blotting)  
**Form of Antibody:** Rabbit IgG in phosphate buffered saline (without Mg<sup>2+</sup> and Ca<sup>2+</sup>), pH 7.4, 150mM NaCl, 0.02% sodium azide and 50% glycerol.  
**Storage/Stability:** Store at -20°C/1 year  
**Immunogen:** The antiserum was produced against synthesized phosphopeptide derived from human MKK6 around the phosphorylation site of serine 207 (V-D-S<sup>P</sup>-V-A).  
**Purification:** The antibody was affinity-purified from rabbit antiserum by affinity-chromatography using epitope-specific phosphopeptide. The antibody against non-phosphopeptide was removed by chromatography using non-phosphopeptide corresponding to the phosphorylation site.  
**Specificity/Sensitivity:** MKK6 (phospho-Ser207) antibody detects endogenous levels of MKK6 only when phosphorylated at serine207.  
**Reactivity:** Human, Rat  
**Applications:** WB: 1:1000  
**Swiss-Prot No. :** P52564  
**References:** Wang W, et al. (2002) Mol Cell Biol ; 22(10): 3389-403.  
 Raingeaud J, et al. (1996) Mol Cell Biol; 16(3): 1247-55.



Western blot analysis of extract from MDA-MB-435 cells untreated or treated with UV, using MKK6 (Ab-207) antibody (AP21153, Lane 1 and 2) and MKK6 (phospho-Ser207) antibody (pAP011146, Lane 3 and 4).

**For Research Use Only**

Contact & Ordering Information: Angio-Proteomie, 11 Park Drive, Suite 12, Boston, MA 02215, USA. Fax: (480) 247-4337, [angioproteomie@gmail.com](mailto:angioproteomie@gmail.com)