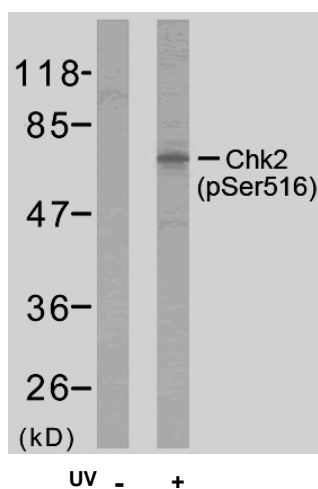


## Rabbit anti Chk-2 (pSer516)

- Catalog Number:** pAP11147  
**Amount:** 100µl (for 10 Western Blotting)  
**Form of Antibody:** Rabbit IgG in phosphate buffered saline (without Mg<sup>2+</sup> and Ca<sup>2+</sup>), pH 7.4, 150mM NaCl, 0.02% sodium azide and 50% glycerol.  
**Storage/Stability:** Store at -20°C/1 year  
**Immunogen:** The antiserum was produced against synthesized phosphopeptide derived from human Chk2 around the phosphorylation site of serine 516 (Q-P-S<sup>P</sup>-T-S).  
**Purification:** The antibody was affinity-purified from rabbit antiserum by affinity-chromatography using epitope-specific phosphopeptide. The antibody against non-phosphopeptide was removed by chromatography using non-phosphopeptide corresponding to the phosphorylation site.  
**Specificity/Sensitivity:** Chk2 (phospho-Ser516) antibody detects endogenous levels of Chk2 only when phosphorylated at serine 516.  
**Reactivity:** Human  
**Applications:** WB: 1:1000  
**Swiss-Prot No. :** O96017  
**References:** Wu X, Chen J et al.(2003)J Biol Chem; 278(38): 36163-8  
Schwarz JK, et al.(2003)Mol Cancer Res; 1(8): 598-609  
Lou Z, et al.(2003) Nature; 421(6926): 957-61



Western blot analysis of extracts from HeLa cells using Chk2 (phospho-Ser516) antibody (pAP11147).

**For Research Use Only**

Contact & Ordering Information: Angio-Proteomie, 11 Park Drive, Suite 12, Boston, MA 02215, USA. Fax: (480) 247-4337, [angioproteomie@gmail.com](mailto:angioproteomie@gmail.com)