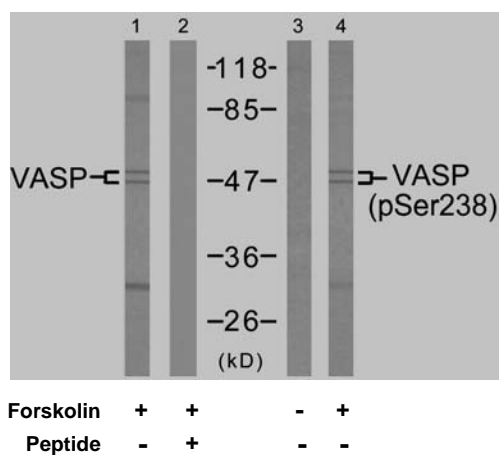


## Rabbit anti VASP (pSer238)

- Catalog Number:** pAP11158  
**Amount:** 100µl (for 10 Western Blotting)  
**Swiss-Prot No. :** P50552  
**Form of Antibody:** Rabbit IgG in phosphate buffered saline (without Mg<sup>2+</sup> and Ca<sup>2+</sup>), pH 7.4, 150mM NaCl, 0.02% sodium azide and 50% glycerol.  
**Storage/Stability:** Store at -20°C/1 year  
**Immunogen:** The antiserum was produced against synthesized phosphopeptide derived from human VASP around the phosphorylation site of serine 238 (K-V-S<sup>P</sup>-K-Q).  
**Purification:** The antibody was affinity-purified from rabbit antiserum by affinity-chromatography using epitope-specific phosphopeptide. The antibody against non-phosphopeptide was removed by chromatography using non-phosphopeptide corresponding to the phosphorylation site.  
**Specificity/Sensitivity:** VASP (phospho-Ser238) antibody detects endogenous levels of VASP only when phosphorylated at serine 238.  
**Reactivity:** Human, Mouse, Rat  
**Applications:** WB: 1:1000  
**References:** Zhao WM, et al. (2001) EMBO J; 20(9): 2315-2325  
 Millard TH, et al. (2005) EMBO J; 24(2): 240-250  
 Kühnel K, et al. (2004) Proc Natl Acad Sci U S A; 101(49): 17027-17032  
 Haffner C, et al. (1995) EMBO J; 14(1): 19-27  
 Ramesh N, et al. (1997) Proc Natl Acad Sci U S A; 94(26): 14671-14676



Western blot analysis of extract from NIH/3T3 cells untreated or treated with forskolin (40µM, 30min), using VASP (Ab-238) antibody (AP21172, Line 1 and 2) and VASP (phospho-Ser238) antibody (pAP11158, Line 3 and 4).

**For Research Use Only**

Contact & Ordering Information: Angio-Proteomie, 11 Park Drive, Suite 12, Boston, MA 02215, USA. Fax: (480) 247-4337, [angioproteomie@gmail.com](mailto:angioproteomie@gmail.com)