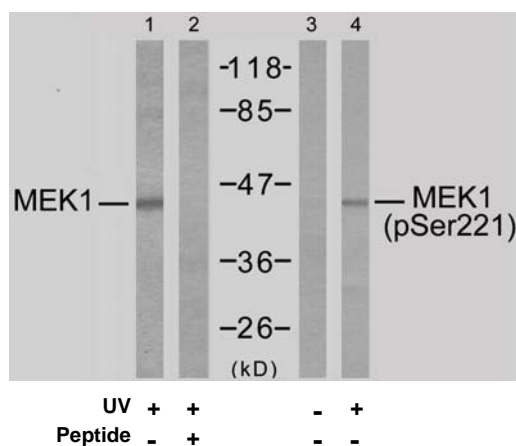


## Rabbit anti MEK-1 (pSer221)

- Catalog Number:** pAP11161
- Amount:** 100µl (for 10 Western Blotting)
- Form of Antibody:** Rabbit IgG in phosphate buffered saline (without Mg<sup>2+</sup> and Ca<sup>2+</sup>), pH 7.4, 150mM NaCl, 0.02% sodium azide and 50% glycerol.
- Storage/Stability:** Store at -20°C/1 year
- Immunogen:** The antiserum was produced against synthesized phosphopeptide derived from human MEK1 around the phosphorylation site of serine 221 (A-N-S<sup>P</sup>-F-V).
- Purification:** The antibody was affinity-purified from rabbit antiserum by affinity-chromatography using epitope-specific phosphopeptide. The antibody against non-phosphopeptide was removed by chromatography using non-phosphopeptide corresponding to the phosphorylation site.
- Specificity/Sensitivity:** MEK1 (phospho-Ser221) antibody detects endogenous levels of MEK1 only when phosphorylated at serine 221.
- Reactivity:** Human, Mouse, Rat
- Applications:** WB: 1:1000
- Swiss-Prot No. :** Q02750
- References:** Zebisch A, et al. (2006) Cancer Res; 66(7): 3401-8.  
Luciano BS, et al.(2006)J Biol Chem; 279(50): 52117-23.  
Wang X, et al. (2003) Oncogene; 22(1): 109-16.  
Gopalbhai K, et al. (2003) J Biol Chem; 278(10): 8118-25.  
Ling MT, et al. (2002)Oncogene; 21(55): 8498-505.



Western blot analysis of extracts from Jurkat cells, using MEK1 (Ab-221) antibody (AP21175, Lane 1 and 2) and MEK1 (phospho-Ser221) antibody (pAP11161, Lane 3 and 4).

**For Research Use Only**

Contact & Ordering Information: Angio-Proteomie, 11 Park Drive, Suite 12, Boston, MA 02215, USA. Fax: (480) 247-4337, [angioproteomie@gmail.com](mailto:angioproteomie@gmail.com)